



LUNIGIANA 2000

real estate

Réf. 496A

Detached house



DESCRIPTION

Detached house with large **terrace** and beautiful **garden** of approximately 2.000 sq m set just 1,2 km far from amenities and railway station.

The property, easy to reach by asphalt road, comprises:

- living room with fireplace opening onto an outside **pergola**, kitchen, hall, bathroom with shower and cellar on ground floor;
- hallway, two double bedrooms, bathroom with bath and single bedroom opening onto a large terrace on first floor.

Central heating (propane gas).

Driveway entrance with remote controlled gate.

The garden is characterized by fruit trees, olive groves and a lot of flowers.

DÉTAILS TECHNIQUES

Surface habitable

105 m²

Surface extérieure

140 m²

Niveau sonore

0 - zona molto silenziosa

Étages

2

Pièces

5

Chambres

3

Salles de bain

2

Jardin

1949 m²

Terrain

1949 m²

Cave

5 m²

Place de parking

5 m²

Terrasse

30 m²

Altitude m s.n.m.

315

État

abitabile

Chauffage

Autonomo a gas metano

Vue panoramique

Oui

Meublé

Oui

Catégorie

G

MESSAGES.PROPERTY_IMAGES























































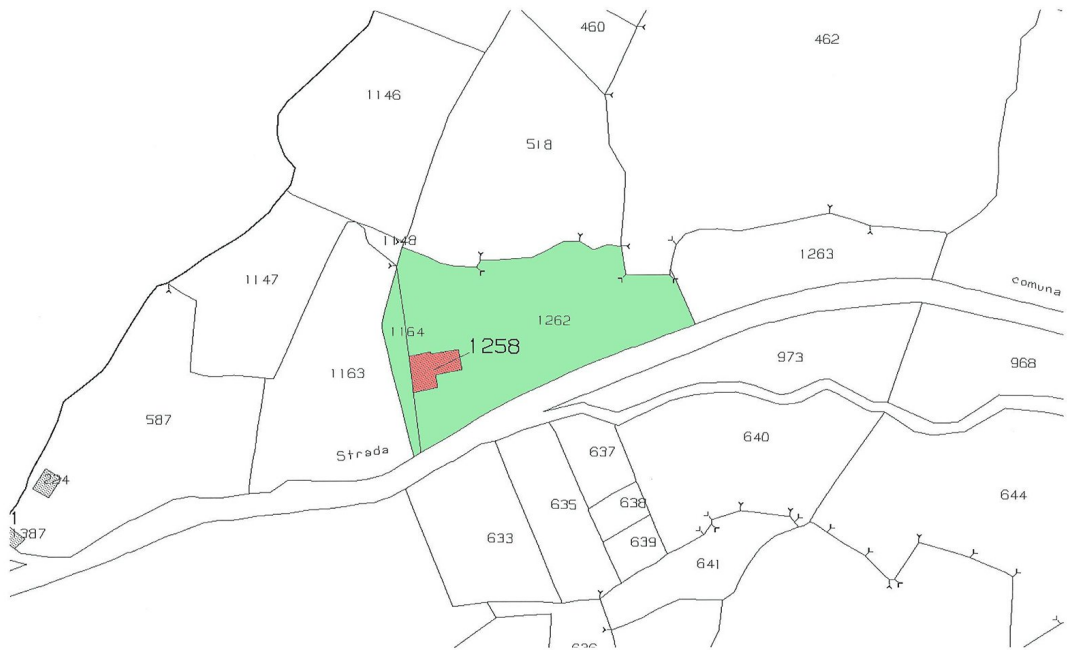






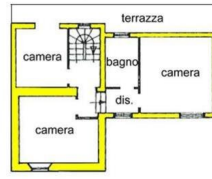








PIANO TERRA



PIANO PRIMO