



LUNIGIANA 2000

real estate

Réf. 552

Large stone property



DESCRIPTION

Large **stone property** which is over 800 sq m with **land, large terrace and garage** set in a small town with amenities and railway station.

The property, on three levels, is divided into two units and comprises:

1) commercial premises:

- Dining room, kitchen, bar, hall, two bathrooms, another bathroom requiring finishing, characteristic large room and garage on ground floor;

2) house:

- Living room, kitchen, terrace, 7 double bedrooms, bathroom, pantry, cellar, another external bathroom, terrace of 134 sq m and courtyard-land of 840 sq m on the first floor;

- Taverna, drying room, portico, wood shed, 3 cellars and courtyard of 184 sq m. on the second floor.

Central heating (natural gas).

It is possible to buy this property separately.

DÉTAILS TECHNIQUES

Surface habitable

822 m²

Surface extérieure

912 m²

Niveau sonore

1 - zona silenziosa

Source d'eau

Fiume/Torrente

Étages

3

Pièces

16

Chambres

7

Salles de bain

4

Terrain

1000 m²

Cour

1000 m²

Cave

200 m²

Garage

30 m²

Place de parking

10 m²

Terrasse

174 m²

Portique

Oui

Altitude m s.n.m.

160

État

abitable

Chauffage

Autonomo a gas metano

Vue panoramique

Oui

Vue sur les Alpes Apuanes

Oui

Vue sur les Apennins

Oui

Meublé

Oui

Catégorie

G

MESSAGES.PROPERTY_IMAGES























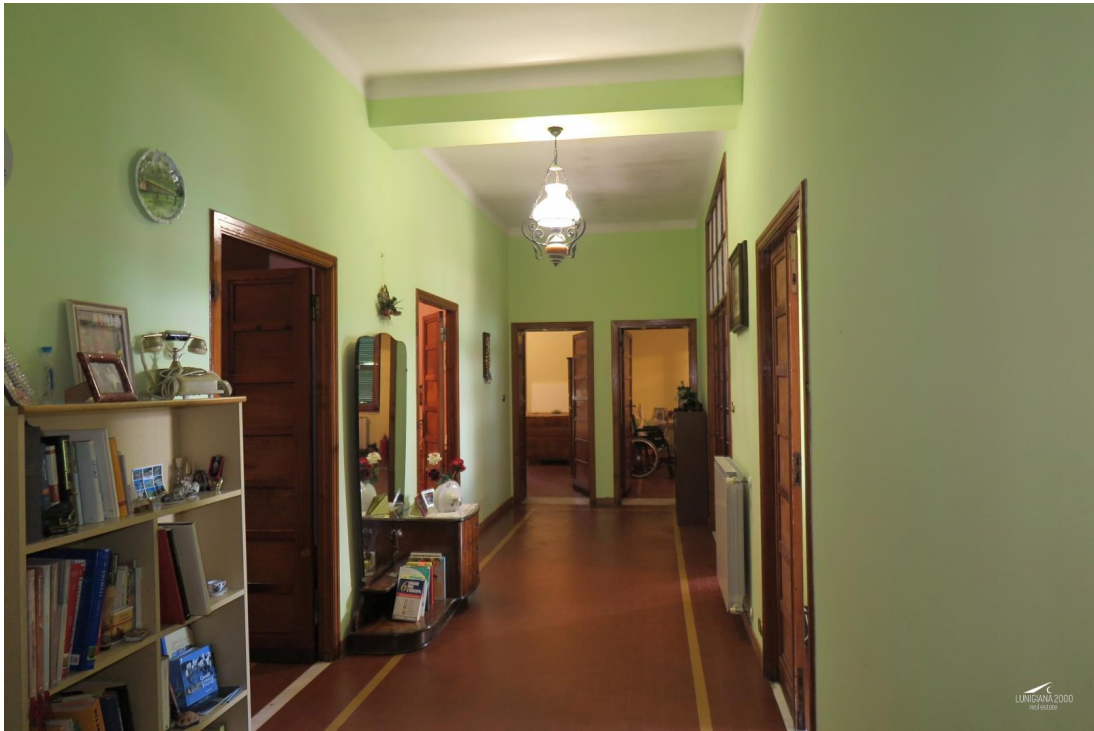


































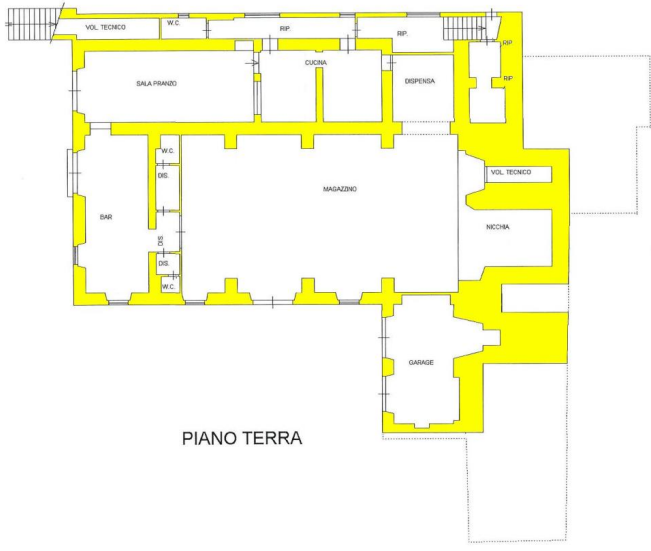












PIANO TERRA