



LUNIGIANA 2000

real estate

Réf. 606A

Stone farmhouse



DESCRIPTION

Stone farmhouse with courtyard, land and amazing panoramic views set in a charming medieval village with facilities such as bars, restaurants, bakeries, grocery shops, bank, shops and so on.

The property, free on three sides, consists of:

- three cellars on ground floor;
- entrance hall, kitchenette, bathroom with shower, large kitchen, hallway, two double bedrooms and bathroom with bath on first floor.

Central heating (natural gas).

The property also includes a detached warehouse used as wood shed.

DÉTAILS TECHNIQUES

Surface habitable

200 m²

Surface extérieure

230 m²

Niveau sonore

0 - zona molto silenziosa

Étages

2

Pièces

4

Chambres

2

Salles de bain

2

Jardin

4000 m²

Terrain

4000 m²

Cave

Oui

Place de parking

4 m²

Terrasse

2 m²

Altitude m s.n.m.

300

État

abitabile

Chauffage

Autonomo a gas metano

Vue panoramique

Oui

Vue sur les Apennins

Oui

Meublé

Oui

Catégorie

G

MESSAGES.PROPERTY_IMAGES

























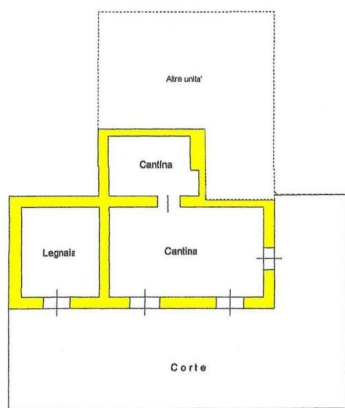




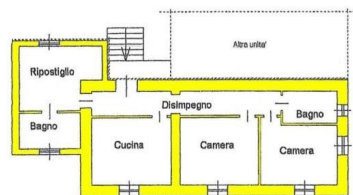




Piano Terra



Piano Terra



Piano Primo