



LUNIGIANA 2000

real estate

Réf. 246A

Typical stone house



DESCRIPTION

Typical stone house set in a charming medieval village with amenities such as shops, bars, restaurants, bakeries, bank, chemista and so on.

The property, free on three sides and on three levels, comprises:

- entrance hall, kitchenette with fireplace, taverna and bathroom on ground floor;
- hallway, kitchen and living room with **balcony** on first floor;
- hall, toilet and two bedrooms on second floor.

Central heating (natural gas).

The car can be parked at approximately 60 meters far from the house.

DÉTAILS TECHNIQUES

Surface habitable
120 m²
Surface extérieure
150 m²
Niveau sonore
0 - zona molto silenziosa
Source d'eau
Fiume/Torrente
Étages
3
Pièces
6
Chambres
2
Salles de bain
2
Cour
Oui
Balcon
4 m²
Altitude m s.n.m.
230
État
abitable
Chauffage
Autonome a gas metano
Vue panoramique
Oui
Meublé
Oui

Catégorie

G

MESSAGES.PROPERTY_IMAGES



















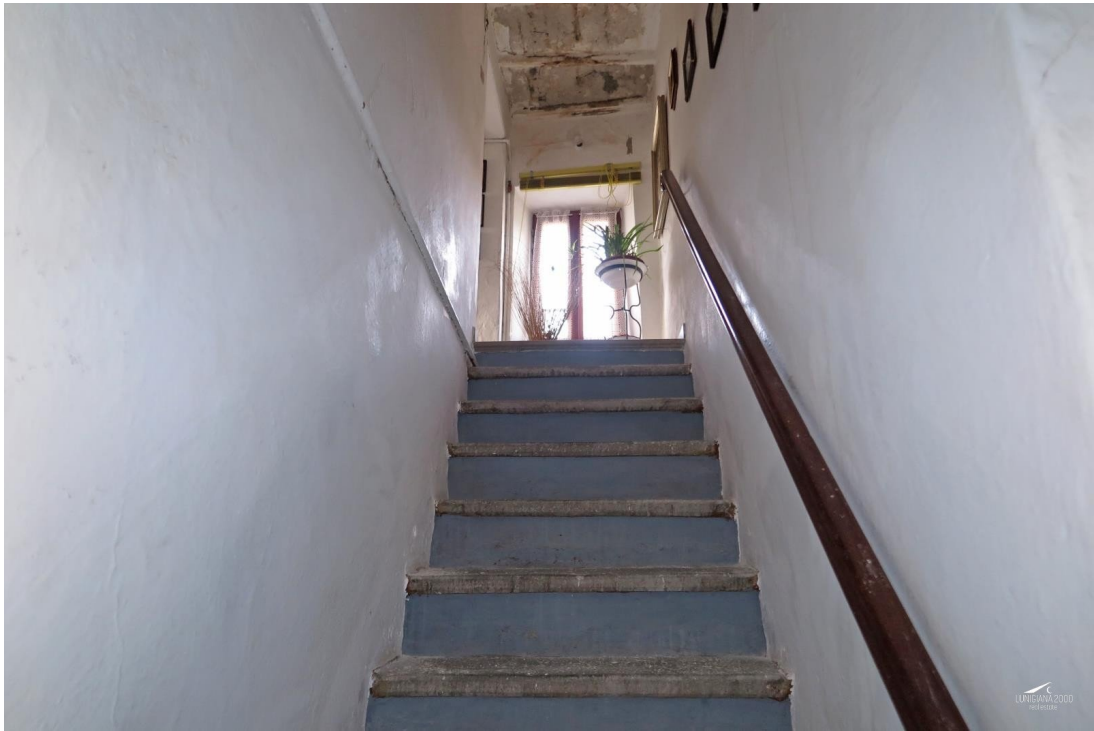














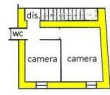












piano secondo



piano primo



piano terra