



LUNIGIANA 2000

real estate

Réf. 615A

Detached house of the early twentieth century



DESCRIPTION

Detached house of the early twentieth century with a **small garden, parking space and panoramic terrace** set in a charming medieval village with facilities.

The property consists of;

- 7 cellars on lower ground floor;
- Living room with pellet burning stove, kitchen, walk-in closet, bedroom, study and bathroom with shower on ground floor (right side);
- Under the terrace-apartment with large room, kitchenette and bathroom with shower in ground floor;
- Hall, two bedrooms and bathroom with shower on ground floor (left side);

- Hallway, kitchen, living room with dining area, two double bedrooms with air conditioning, bathroom with shower, **balcony** and large terrace on first floor.

Central heating (natural gas).

DÉTAILS TECHNIQUES

Surface habitable

340 m²

Surface extérieure

430 m²

Niveau sonore

1 - zona silenziosa

Étages

3

Pièces

8

Chambres

6

Salles de bain

4

Jardin

46 m²

Terrain

46 m²

Cave

130 m²

Place de parking

Oui

Terrasse

42 m²

Balcon

3 m²

Altitude m s.n.m.

230

Classe énergétique

250.50 Kw/h m²

État

abitabile

Chauffage

Autonomo a gas metano

Vue panoramique

Oui

Vue sur les Apennins

Oui

Meublé

Oui

Catégorie

G

MESSAGES.PROPERTY_IMAGES

























































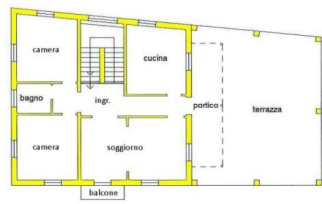




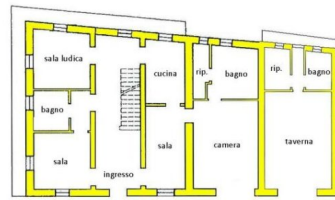




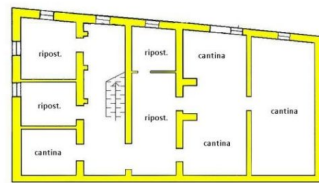




PIANO PRIMO



PIANO TERRA



PIANO S1

