



LUNIGIANA 2000

real estate

Réf. 618

Semi-detached house



DESCRIPTION

Semi-detached house, free on three sides, set in a charming village at 530 metres above sea level.

The property comprises;

- Entrance into a living room with dining area, kitchenette, hall and stairwell where there is the pellet boiler, boiler room, and external cellar on ground floor;
- Hallway, two double bedrooms and bathroom with shower on first floor.

Warehouse:

- Room used as storage and toilet on ground floor;
- Wooden mezzanine on first floor.

Central heating (natural gas and pellet).

Fully furnished.

The car must park at the public parking approximately 50 meters far.

DÉTAILS TECHNIQUES

Surface habitable

100 m²

Surface extérieure

150 m²

Niveau sonore

0 - zona molto silenziosa

Étages

2

Pièces

5

Chambres

2

Salles de bain

1

Cour

Oui

Cave

Oui

Altitude m s.n.m.

520

État

abitabile

Chauffage

Caldaia a pellet

Meublé

Oui

Catégorie

G

MESSAGES.PROPERTY_IMAGES



































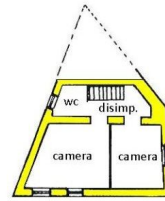








piano terra



piano primo

