

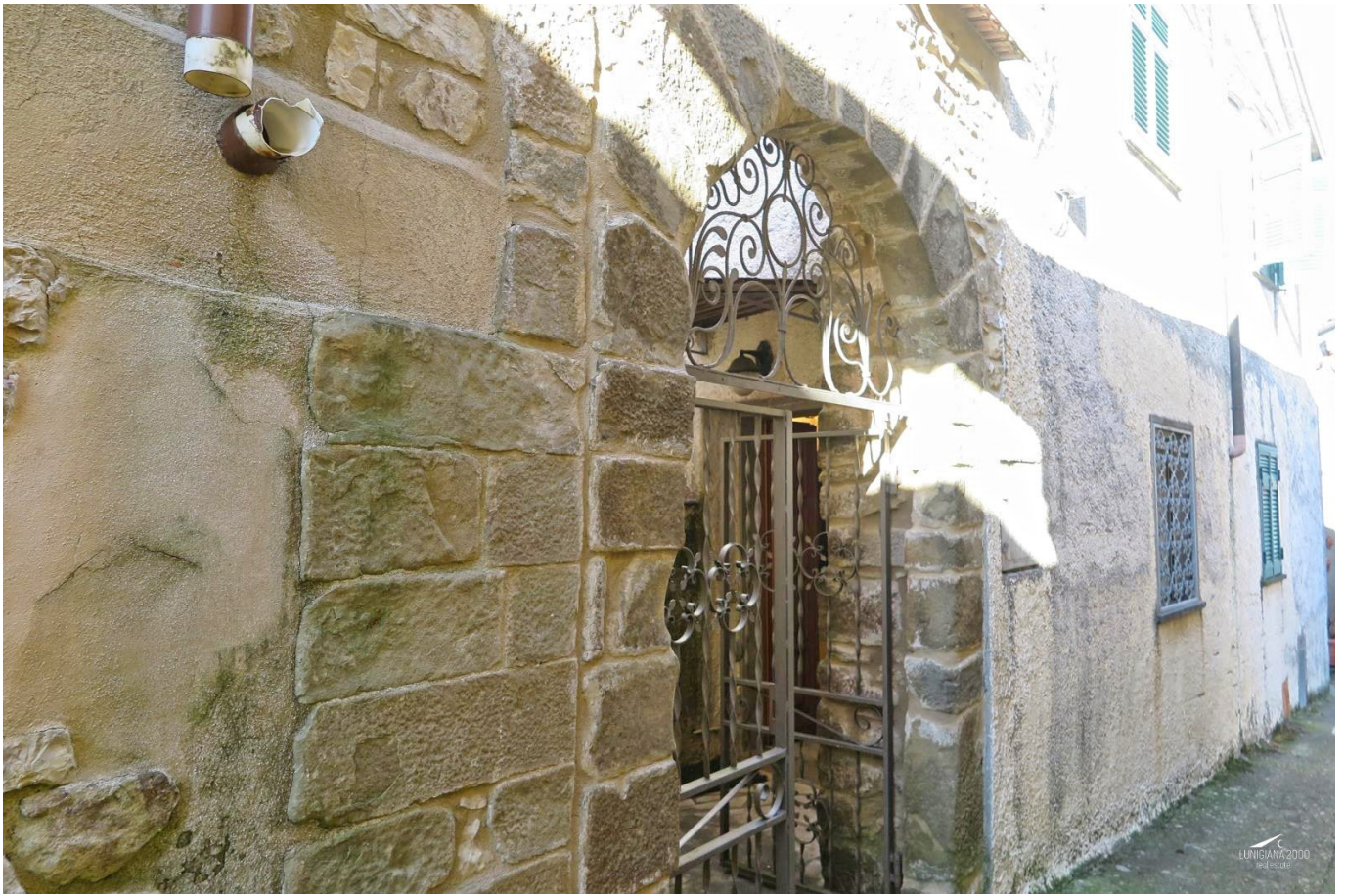


LUNIGIANA 2000

real estate

Réf. 608

Typical village house



DESCRIPTION

Typical **village house** from ground to roof with large **terrace** and amazing panoramic views over the valley set in a charming hamlet at 450 meters above sea level.

The property comprises:

- **courtyard**, entrance hall, kitchen with fireplace, hallway, store room and bathroom with bath on ground floor;
- hall, two bedrooms, bathroom and large panoramic terrace on first floor;
- attic bedroom on second floor.

Central heating.

Fully furnished

DÉTAILS TECHNIQUES

Surface habitable

95 m²

Surface extérieure

135 m²

Niveau sonore

0 - zona molto silenziosa

Étages

3

Pièces

5

Chambres

3

Salles de bain

2

Terrasse

22 m²

Altitude m s.n.m.

450

Classe énergétique

257.99 Kw/h m²

État

abitabile

Chauffage

Autonomo a gas metano

Vue panoramique

Oui

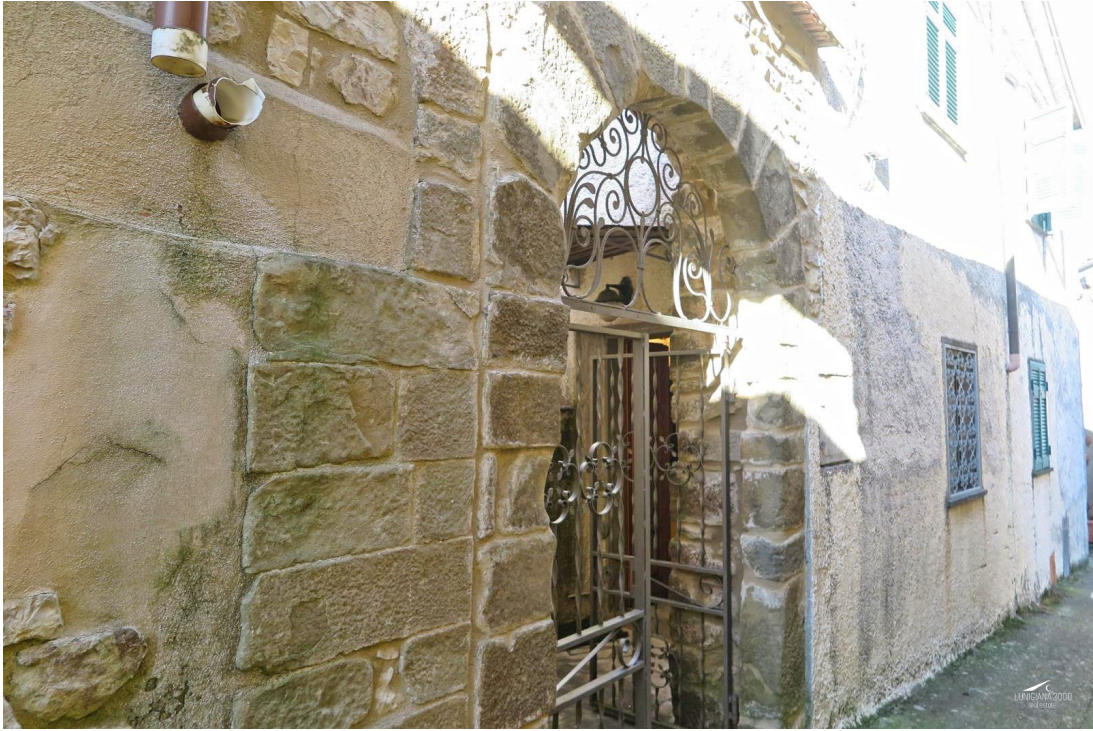
Meublé

Oui

Catégorie

G

MESSAGES.PROPERTY_IMAGES











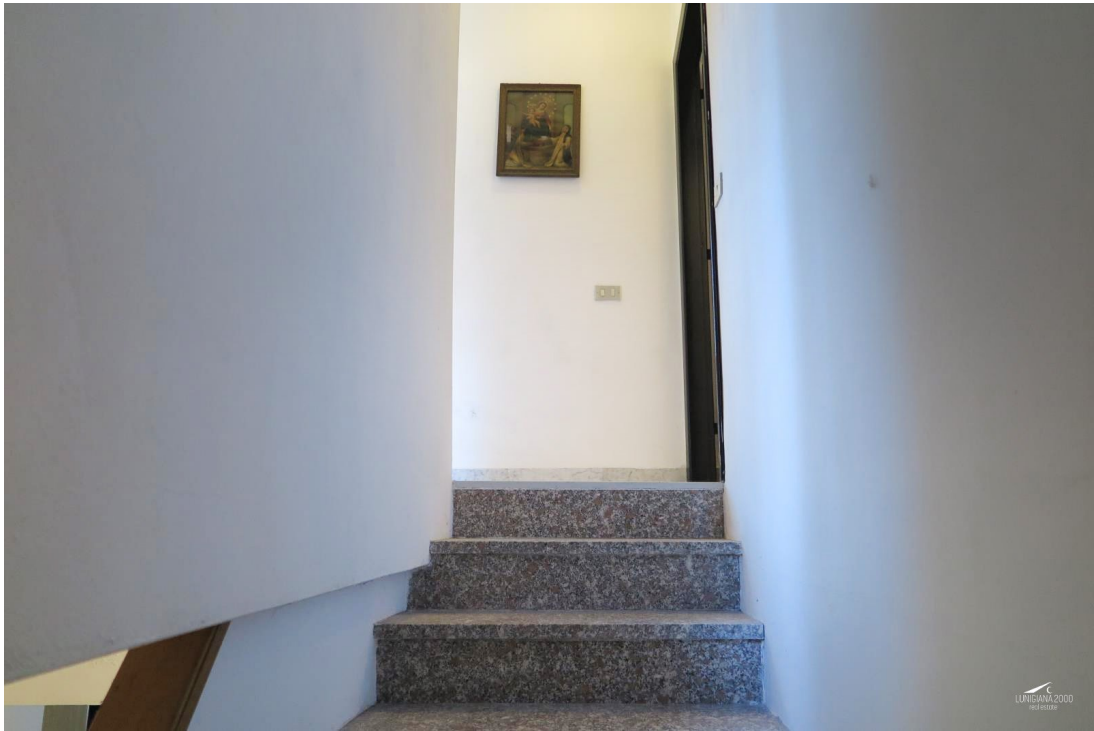


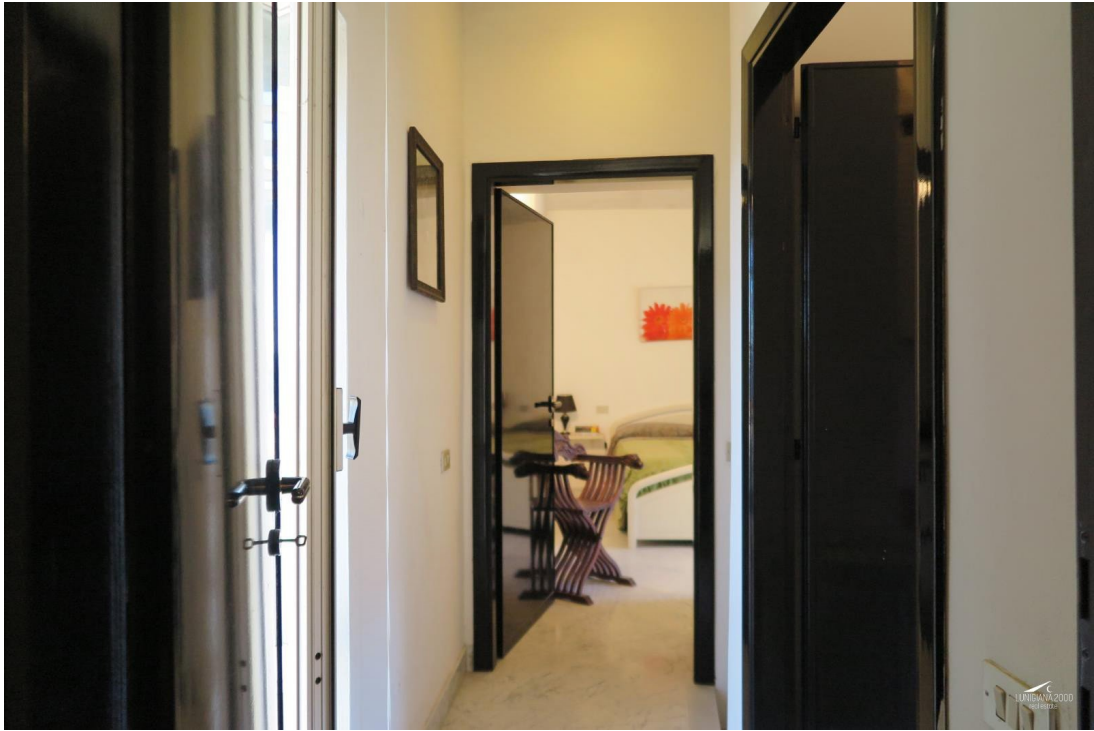




















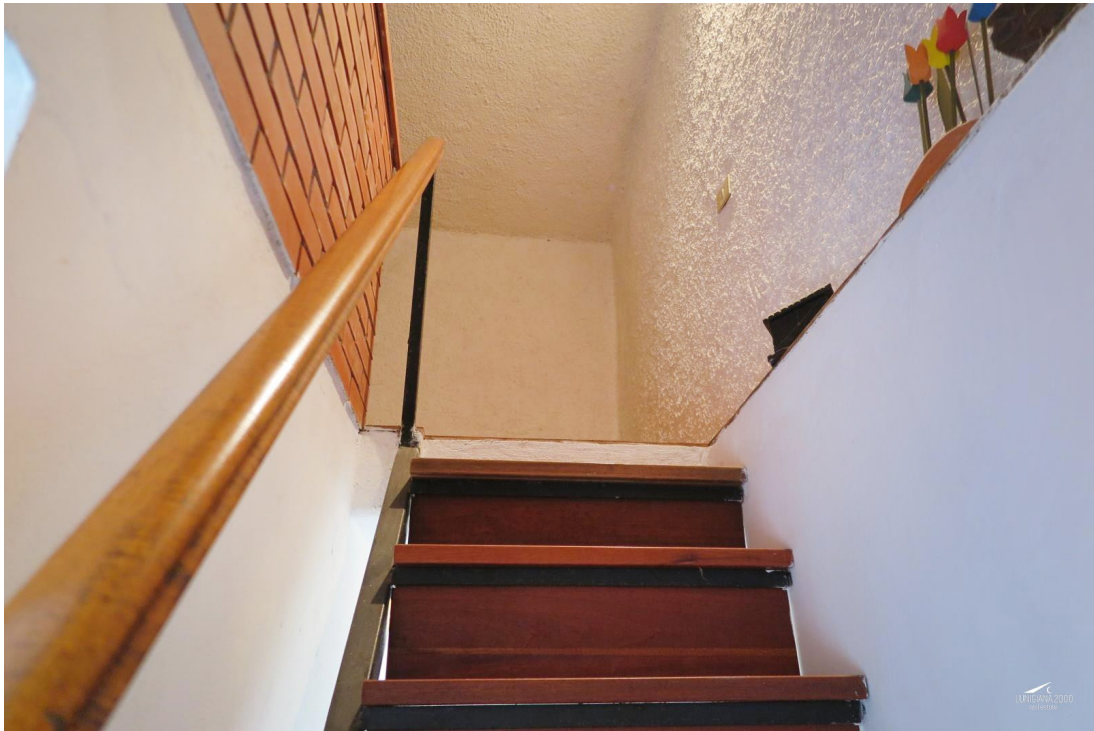
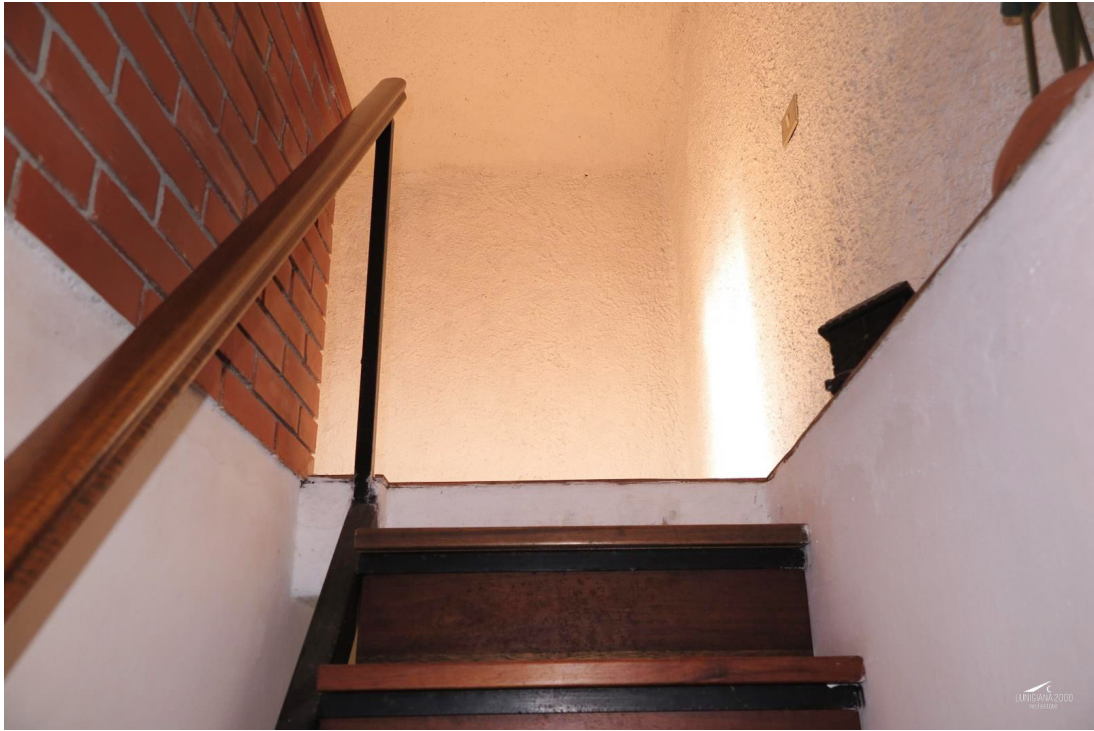










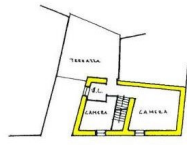




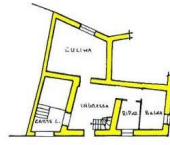




PIAHN BEKANDA



PIAHN YAIMA



PIAHN TESSA

