



LUNIGIANA 2000

real estate

Réf. 025L

Detached restored stone house



DESCRIPTION

Typical detached restored stone house with courtyard, garden and panoramic views over the Apuan Alps situated just 4 km far from a charming medieval town with amenities.

The property comprises:

- double entrance, living room, kitchen and toilet on ground floor;
- three bedrooms, bathroom with shower and store room on first floor

Central heating (electric floor system) .

It is possible to park the car at approximately 10 meters far from the house.

DÉTAILS TECHNIQUES

Surface habitable

90 m²

Surface extérieure

145 m²

Niveau sonore

0 - zona molto silenziosa

Étages

2

Pièces

5

Chambres

3

Salles de bain

2

Jardin

171 m²

Terrain

171 m²

Cour

20 m²

Altitude m s.n.m.

385

État

ristrutturato

Chauffage

Pompa di Calore

Vue panoramique

Oui

Vue sur les Alpes Apuanes

Oui

Meublé

Oui

Catégorie

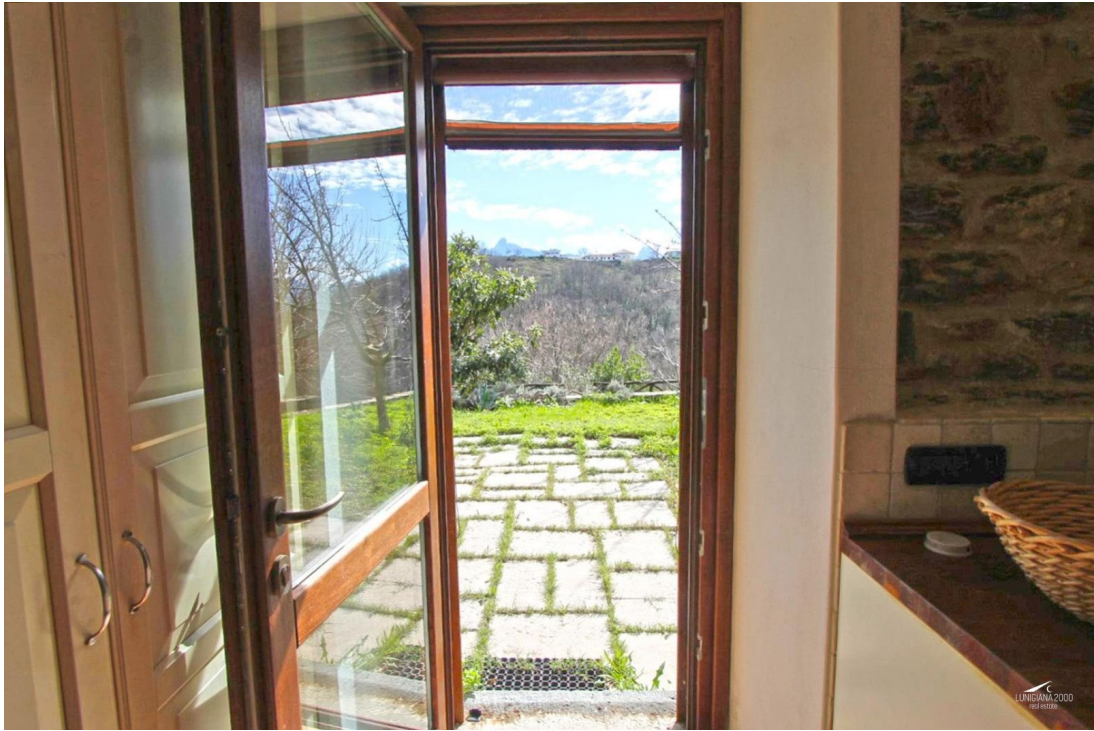
E

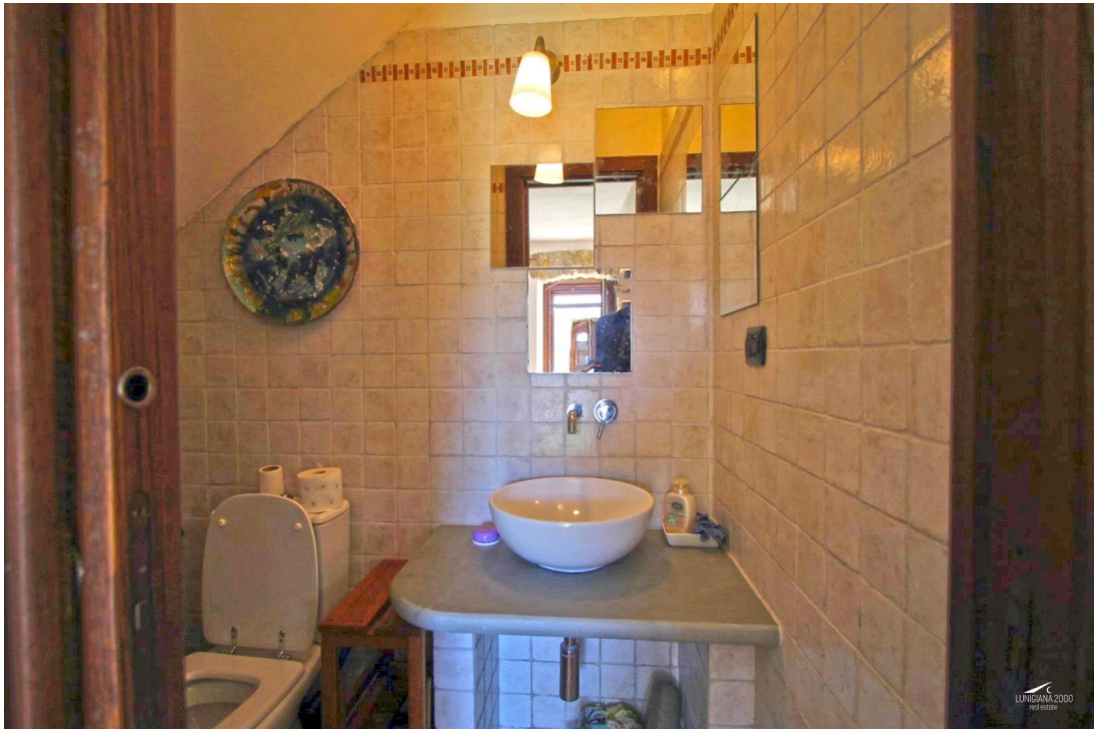
MESSAGES.PROPERTY_IMAGES

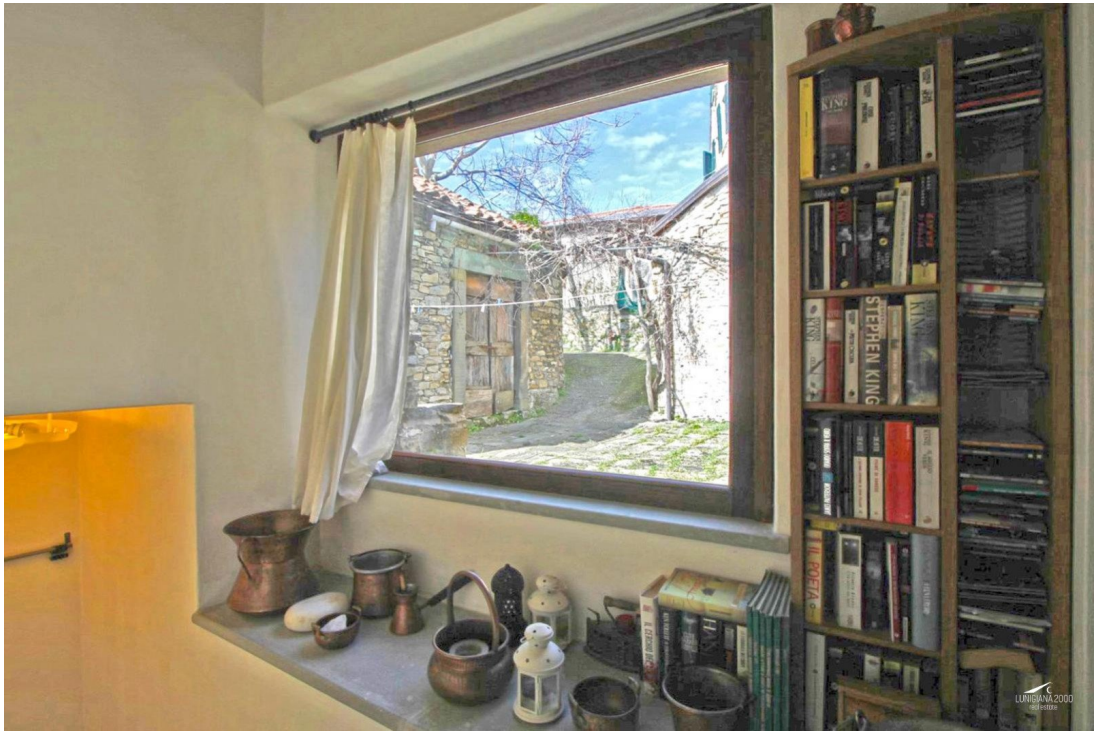


















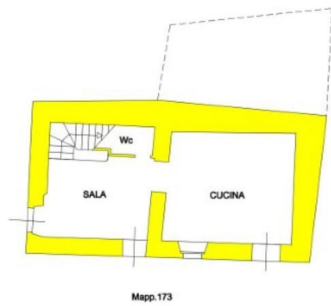




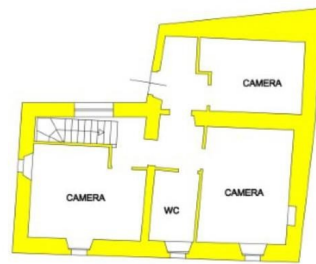








PIANO TERRA



PIANO PRIMO