



LUNIGIANA 2000

real estate

Réf. 026L

Semi-detached house



DESCRIPTION

Semi-detached house with **garden, car park and cellar** set close to a charming medieval town with amenities.

The property consists of :

- two rooms used as a cellar on ground floor;
- living room, kitchen, bedroom and bathroom

Central heating (wood burning stove).

DÉTAILS TECHNIQUES

Surface habitable

80 m²

Surface extérieure

99 m²

Niveau sonore

1 - zona silenziosa

Étages

2

Pièces

3

Chambres

1

Salles de bain

1

Jardin

Oui

Cave

43 m²

Place de parking

Oui

Terrasse

10 m²

Altitude m s.n.m.

530

État

abitabile

Chauffage

Stufa a Legna

Vue sur les Apennins

Oui

Meublé

Oui

Catégorie

F

MESSAGES.PROPERTY_IMAGES

















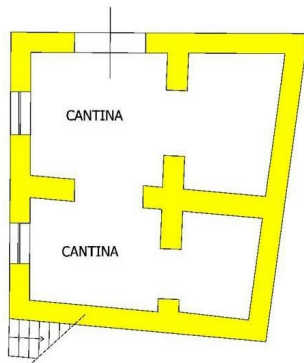








PIANO TERRA



PIANO PRIMO

