



LUNIGIANA 2000

real estate

Réf. 004B

Portion of house



DESCRIPTION

Portion of house with **two large terraces** with amazing panoramic views over the Tuscan-Emilian Apennines and a **garden** set in an hillside borgo, at 340 meters above sea level.

The property comprises:

- kitchen opening onto two panoramic terraces and sitting room on ground floor;
- hall, double bedroom and bathroom with shower on lower level;
- cellar-laundry room on lower ground floor.

Central heating (natural gas).

The property also includes a **small stone outbuilding** used as tool shed which is on the garden of 200 sq m, where it is possible to park two or three cars.

DÉTAILS TECHNIQUES

Surface habitable

60 m²

Surface extérieure

86 m²

Niveau sonore

0 - zona molto silenziosa

Étages

1

Pièces

3

Chambres

2

Salles de bain

1

Jardin

207 m²

Terrain

207 m²

Cave

Oui

Place de parking

3 m²

Terrasse

Oui

Altitude m s.n.m.

340

État

abitabile

Chauffage

Autonomo a gas metano

Vue panoramique

Oui

Vue sur les Alpes Apuanes

Oui

Vue sur les Apennins

Oui

Meublé

Oui

Catégorie

G

MESSAGES.PROPERTY_IMAGES

























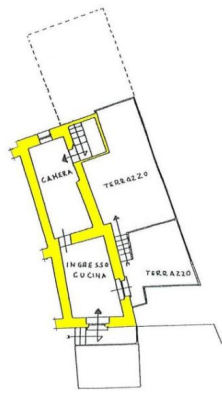
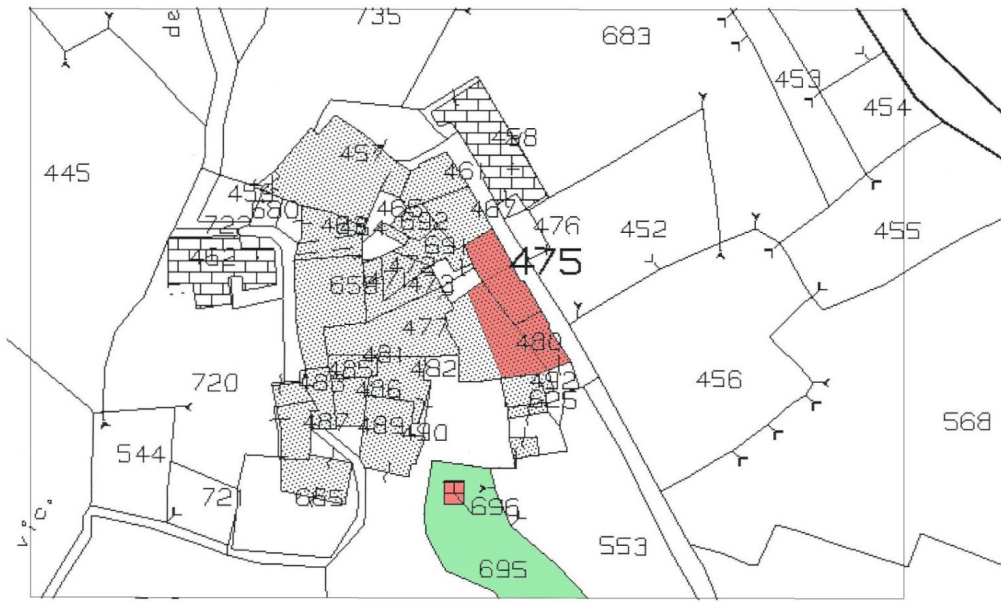




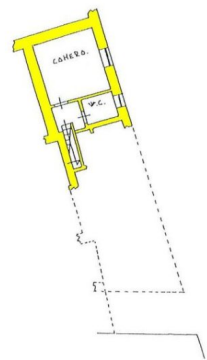




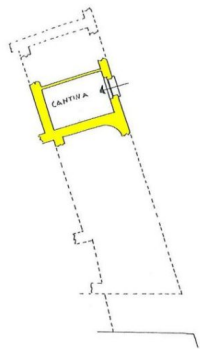




PIANO TERRA



1° PIANO SOTTOSTRADA



2° PIANO SOTTOSTRADA