



# LUNIGIANA 2000

real estate

**Réf. 047**

---

# Restored semi-detached stone house



## DESCRIPTION

**Restored semi-detached stone house** with panoramic **terrace** situated in a typical charming medieval borgo with a marvellous Malaspina Castle.

The property, free on three sides, comprises:

- **Courtyard** and two cellars on second lower ground floor;
- Entrance hall with stairwell, kitchen, terrace and bathroom on lower ground floor;
- Stairwell, hall, two bedrooms, **balcony** and bathroom on ground floor;
- Double bedroom on first floor.

**Central heating (natural gas)**

## DÉTAILS TECHNIQUES

Surface habitable  
70 m<sup>2</sup>  
Surface extérieure  
145 m<sup>2</sup>  
Niveau sonore  
0 - zona molto silenziosa  
Étages  
4  
Pièces  
6  
Chambres  
3  
Salles de bain  
2  
Terrain  
1995 m<sup>2</sup>  
Cour  
8 m<sup>2</sup>  
Cave  
30 m<sup>2</sup>  
Terrasse  
9 m<sup>2</sup>  
Balcon  
1 m<sup>2</sup>  
Portique  
9 m<sup>2</sup>  
Altitude m s.n.m.  
300  
État  
ristrutturato  
Chauffage  
Autonome a gas metano  
Vue panoramique  
Oui

## **Catégorie**

G

MESSAGES.PROPERTY\_IMAGES

































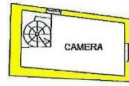




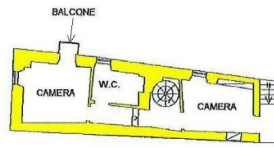




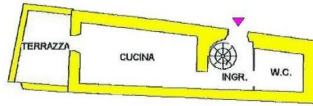




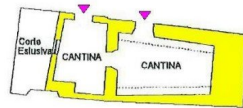
PIANO PRIMO



PIANO TERRA



PIANO PRIMO SEMINTERRATO



PIANO SECONDO SEMINTERRATO