



LUNIGIANA 2000

real estate

Réf. 159A

Detached hoouse



DESCRIPTION

Detached house with beautiful panoramic views over the valley, **a terrace and a garden** where it is possible to build a swimming pool set just 3 km. far from a charming medieval borgo with amenities.

The property, divided into two apartments, consist of :

- kitchen, hall, two double bedrooms, bathroom with shower, **portico**, cellar and **garage** on ground floor;
- terrace, entrance hall, living room with fireplace, kitchen, hallway, three bedrooms, balcony and bathroom with bath on first floor.

Central heating (natural gas).

DÉTAILS TECHNIQUES

Surface habitable

220 m²

Surface extérieure

268 m²

Niveau sonore

0 - zona molto silenziosa

Étages

2

Pièces

8

Chambres

5

Salles de bain

2

Jardin

850 m²

Terrain

850 m²

Cave

4 m²

Garage

32 m²

Place de parking

Oui

Terrasse

18 m²

Balcon

5 m²

Portique

5 m²

Altitude m s.n.m.

400

État

abitable

Chauffage

Autonomo a gas metano

Vue panoramique

Oui

Vue sur les Apennins

Oui

Meublé

Oui

Catégorie

G

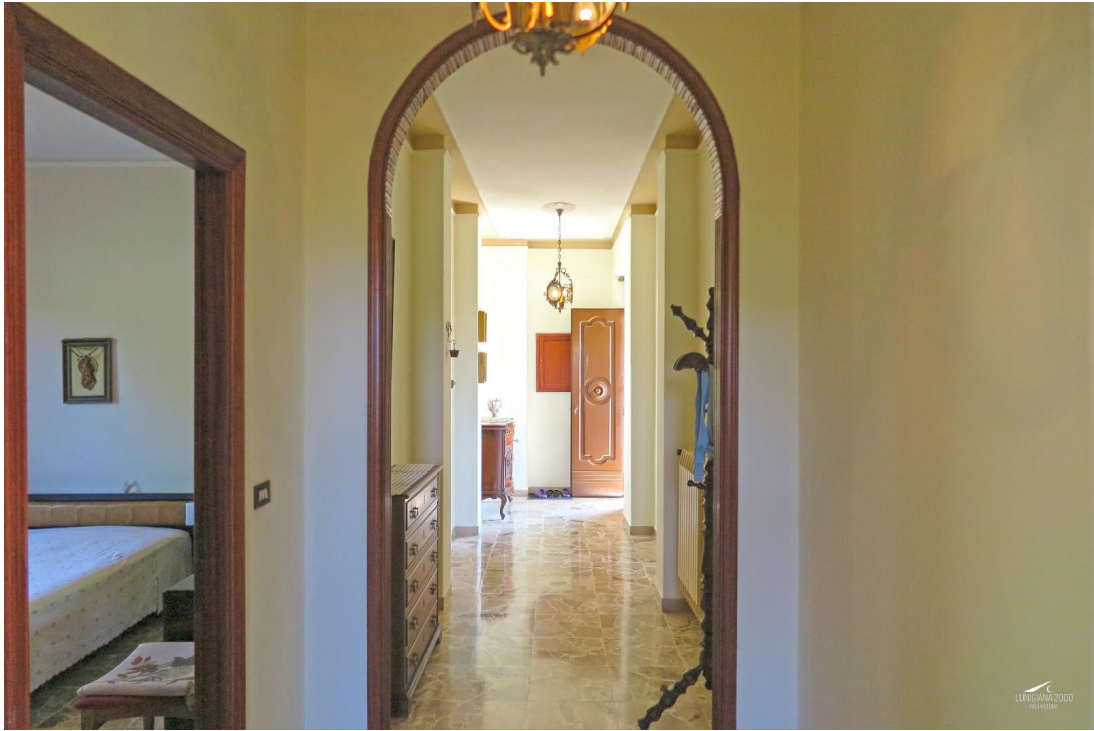
MESSAGES.PROPERTY_IMAGES

















































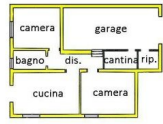




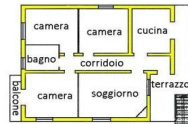








piano terra



piano primo