



# LUNIGIANA 2000

real estate

**Réf. 150A**

---

# Typical stone house



## DESCRIPTION

**Stone village house with two terraces** set in a charming square in the typical medieval borgo which was an ancient walled town of the XIV° century.

The property consists of two units:

1)

- vaulted taverna on ground floor;
- terrace, entrance hall, kitchen, hallway, living room with original old fireplace, double bedroom and bathroom with bath on first floor accessible through an external staircase;

2)

- hall, kitchen, living room with fireplace, double bedroom with balcony and bathroom with

shower on second floor

**Central heating (natural gas).**

**Fully furnished.**

It is possible to reach the house by car.

### **DÉTAILS TECHNIQUES**

Surface habitable

120 m<sup>2</sup>

Surface extérieure

180 m<sup>2</sup>

Niveau sonore

0 - zona molto silenziosa

Étages

3

Pièces

6

Chambres

2

Salles de bain

2

Cave

Oui

Terrasse

Oui

Balcon

Oui

Altitude m s.n.m.

170

État

abitabile

Chauffage

Autonomo a gas metano

Vue panoramique

Oui

Meublé

Oui

### **Catégorie**

G

MESSAGES.PROPERTY\_IMAGES





































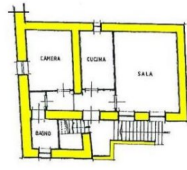




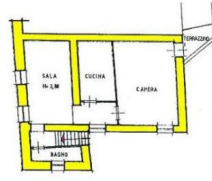




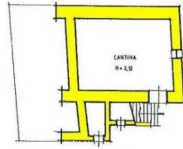




PIANO PRIMO



PIANO SECONDO



PIANO TERRA