



# LUNIGIANA 2000

real estate

**Réf. 029A**

---

# Village house



## DESCRIPTION

**Village house with garden, terrace and parking space** set at 400 meters above sea level, at just 2.3 km. far from a charming medieval borgo with amenities.

The property consists of:

- bedroom with ensuite, hall, characteristic stone vaulted taverna, cellar and store room on ground floor;
- terrace, living room with open plan kitchen, double bedroom, single bedroom, hallway, bathroom with shower and terrace with amazing panoramic views over the valley.

**Central heating (natural gas).**

**Fully furnished.**

## DÉTAILS TECHNIQUES

Surface habitable

120 m<sup>2</sup>

Surface extérieure

180 m<sup>2</sup>

Niveau sonore

0 - zona molto silenziosa

Étages

2

Pièces

5

Chambres

3

Salles de bain

2

Jardin

650 m<sup>2</sup>

Terrain

650 m<sup>2</sup>

Cour

6 m<sup>2</sup>

Cave

35 m<sup>2</sup>

Place de parking

Oui

Terrasse

4 m<sup>2</sup>

Altitude m s.n.m.

410

État

abitable

Chauffage

Autonomo a gas metano

Vue panoramique

Oui

Meublé

Oui

## Catégorie

G

MESSAGES.PROPERTY\_IMAGES





































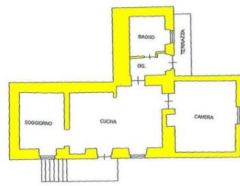




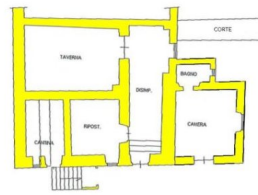








PIANO PRIMO



PIANO TERRA

