



LUNIGIANA 2000

real estate

Réf. 175A

Restored stone detached house



DESCRIPTION

Tastefully **restored stone detached house** with large panoramic **terrace** set in the hillside position with a breathtaking views over the Apuan Alps, easily reachable through an asphalt road.

The property, on two levels, with adjacent 2.920 sq m of **land**, comprising:

- accessed road with courtyard where it is possible to park 2 cars, boiler room, large living room with fireplace, hall, kitchen, dining room, toilet and large terrace with pergola on ground floor;
- hallway, three double bedrooms and two bathrooms on first floor accessible through an internal staircase.

Central heating (natural gas).

DÉTAILS TECHNIQUES

Surface habitable
135 m²
Surface extérieure
190 m²
Niveau sonore
0 - zona molto silenziosa
Étages
2
Pièces
6
Chambres
3
Salles de bain
3
Jardin
2920 m²
Terrain
2920 m²
Cour
90 m²
Place de parking
2 m²
Terrasse
40 m²
Altitude m s.n.m.
460
Classe énergétique
215.12 Kw/h m²
État
ristrutturato
Chauffage
Autonome a gas propano
Vue panoramique
Oui
Vue sur les Alpes Apuanes
Oui

Catégorie

E

MESSAGES.PROPERTY_IMAGES





















































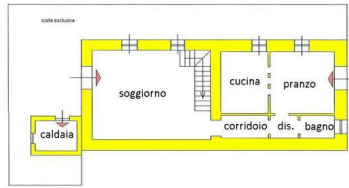




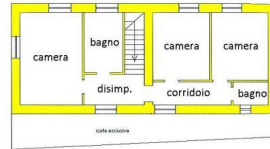








Piano terra



Piano primo

