



LUNIGIANA 2000

real estate

Réf. 031L

Typical restored stone house



DESCRIPTION

Typical **restored stone house** with adjacent **land** of 1.500 sq m and a **parking place** set in a small hillside village at 400 metres above sea level and at 17 kilometres far from the motorway exit.

The property, on three levels, consists of:

- Five cellars on lower ground floor;
- Large **terrace**, store room, sitting room, store room and bathroom with shower on ground floor;
- Two double bedrooms and bathroom with bath on first floor.

Central heating (propane gas with underground tank)

The property has been completely restored in 2000.

DÉTAILS TECHNIQUES

Surface habitable

300 m²

Surface extérieure

430 m²

Niveau sonore

1 - zona silenziosa

Étages

3

Pièces

8

Chambres

2

Salles de bain

2

Jardin

1500 m²

Terrain

1500 m²

Cave

120 m²

Place de parking

2 m²

Terrasse

38 m²

Balcon

5 m²

Altitude m s.n.m.

400

Classe énergétique

0.01 Kw/h m²

État

ristrutturato

Chauffage

Autonomo a gas metano

Vue panoramique

Oui

Vue sur les Alpes Apuanes

Oui

Meublé

Oui

Catégorie

G

MESSAGES.PROPERTY_IMAGES



























LUTIGIANA 2000
red estate



LUTIGIANA 2000
red estate









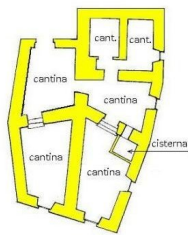
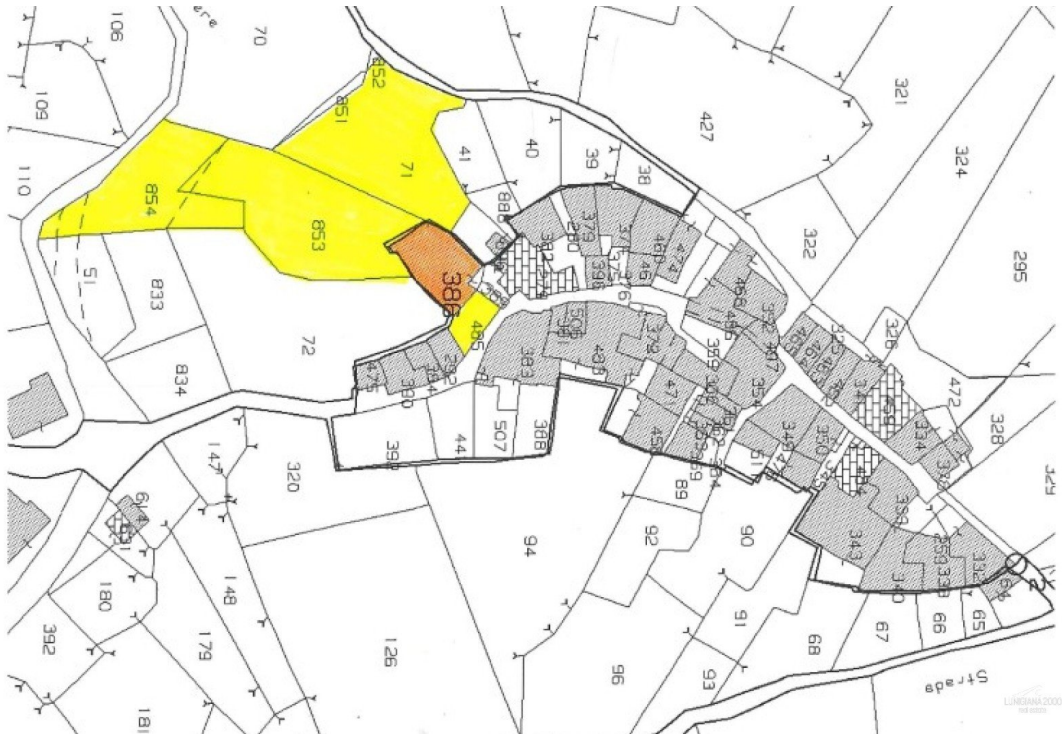












PS



PT



P1