



# LUNIGIANA 2000

real estate

**Réf. 604**

---

# Characteristic village house



## DESCRIPTION

Characteristic **stone village house partially restored** (roof and façade) of 230 sq m with **terrace** and adjacent parking.

The property comprises:

- entrance hall, living room, kitchen with fireplace, bedroom with separate entrance and bathroom on ground floor;
- sitting room/study, two double bedrooms, bathroom and terrace on first floor;
- three cellars and store room on lower ground floor.

The house also includes a large room requiring restoration with separate entrance on ground floor.

**Central heating with propane gas** plus there is the possibility to use natural gas.

The property is set in a lovely village with shops, bar and grocery shops.

## **DÉTAILS TECHNIQUES**

Surface habitable

230 m<sup>2</sup>

Surface extérieure

320 m<sup>2</sup>

Niveau sonore

0 - zona molto silenziosa

Source d'eau

Fiume/Torrente

Étages

3

Pièces

7

Chambres

4

Salles de bain

2

Cave

70 m<sup>2</sup>

Terrasse

15 m<sup>2</sup>

Altitude m s.n.m.

240

Classe énergétique

340.75 Kw/h m<sup>2</sup>

État

abitabile

Chauffage

Autonomo a gas propano

Vue panoramique

Oui

Meublé

Oui

## **Catégorie**

G

MESSAGES.PROPERTY\_IMAGES















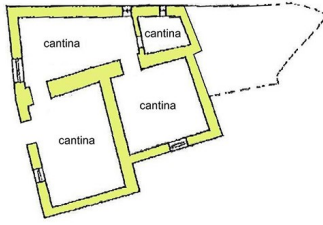




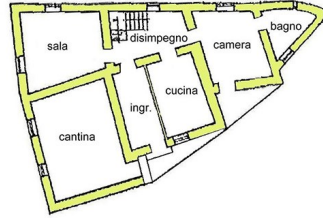




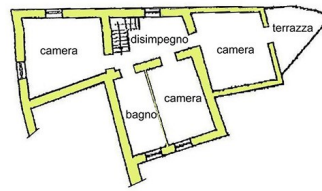




PIANO SEMINTERRATO



PIANO TERRA



PIANO PRIMO