



LUNIGIANA 2000

real estate

Réf. 209A

Village house



DESCRIPTION

Village house set in a charming hillside borgo at 440 meters above sea level and just 3 kilometres far from amenities.

The property, on four levels, comprises:

- Cellar on second lower ground floor;
- 4 cellars on first lower ground floor l;
- Kitchen, **veranda**, store room, bathroom, living room, bedroom and cellar on ground floor;
- Hall and four bedrooms on first floor.

Central heating (natural gas)

You can park the car at approximately 100 meters far from the house.

DÉTAILS TECHNIQUES

Surface habitable

200 m²

Surface extérieure

300 m²

Niveau sonore

0 - zona molto silenziosa

Étages

3

Pièces

9

Chambres

4

Salles de bain

1

Cave

90 m²

Altitude m s.n.m.

440

État

abitabile

Chauffage

Autonomo a gas metano

Vue panoramique

Oui

Vue sur les Alpes Apuanes

Oui

Meublé

Oui

Catégorie

G

MESSAGES.PROPERTY_IMAGES









































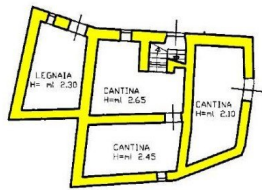




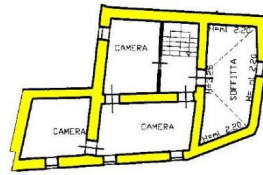








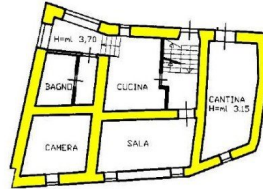
PIANO SEMINTERRATO 1



PIANO PRIMO
H=ml 2.10



PIANO SEMINTERRATO 2
H ml 2.50



PIANO TERRA
H ml 2.25