



LUNIGIANA 2000

real estate

Réf. 244

Large villa



DESCRIPTION

Villa (600 sq m) surrounded by over **2.000 sq m of flat land** situated in a residential area, a few hundred meters from facilities.

The property, built with high quality materials, is divided into two units, and comprises:

- **garage** (70 sq m), large taverna, laundry room, bathroom with shower and cellar on lower ground floor;
- **portico**, entrance hall, living room, with a large loggia, kitchen, portico, four double bedrooms, store room and two bathrooms on ground floor;
- hallway, living room with dining area and terrace, kitchen, with **terrace**, store room, five bedrooms, four of which with **terrace** and two bathrooms on first floor;
- attic area and **two terraces** on upper level accessible through a spiral staircase.

Central heating (natural gas).

DÉTAILS TECHNIQUES

Surface habitable

600 m²

Surface extérieure

680 m²

Niveau sonore

0 - zona molto silenziosa

Étages

3

Pièces

14

Chambres

8

Salles de bain

5

Jardin

2154 m²

Terrain

2154 m²

Cour

2154 m²

Cave

175 m²

Garage

70 m²

Place de parking

Oui

Terrasse

90 m²

Balcon

80 m²

Portique

26 m²

Altitude m s.n.m.

180

Classe énergétique

124.80 Kw/h m²

État

abitabile

Chauffage

Autonomo a gas metano

Vue panoramique

Oui

Vue sur les Apennins

Oui

Catégorie

E

MESSAGES.PROPERTY_IMAGES

















































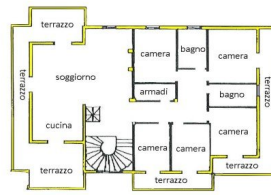








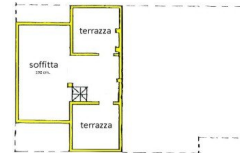
PIANO SEMINTERRATO
H. 2/20



PIANO PRIMO
H. 2/20



PIANO TERRA
H. 2/20



PIANO SECONDO
Sottotetto