



LUNIGIANA 2000

real estate

Réf. 269A

Semi-detached house



DESCRIPTION

Semi-detached house with large terrace, courtyard and garden situated just 6 km. far from a town with amenities, train station and motorway exit.

Its present accommodation presents:

- cellar, boiler room, vaulted underpass, two cellars, toilet and courtyard on ground floor;
- large terrace with bathroom-laundry room on it, entrance hall, kitchen, store room, double bedroom, single bedroom and bathroom with shower on first floor.

Central heating (oil).

There is to possibility of connecting to the village's propane network.

The car can be parked in the piazza in front of the house.

DÉTAILS TECHNIQUES

Surface habitable

60 m²

Surface extérieure

80 m²

Niveau sonore

0 - zona molto silenziosa

Étages

2

Pièces

4

Chambres

2

Salles de bain

3

Jardin

Oui

Terrain

Oui

Cour

Oui

Cave

Oui

Terrasse

Oui

Altitude m s.n.m.

190

État

abitabile

Chauffage

Autonomo a gasolio

Vue panoramique

Oui

Meublé

Oui

Catégorie

G

MESSAGES.PROPERTY_IMAGES

























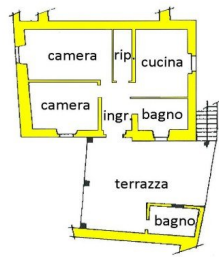




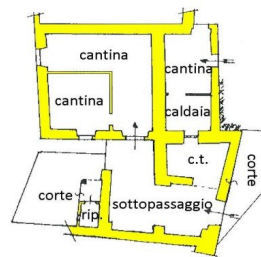








piano primo



piano terra