



# LUNIGIANA 2000

real estate

**Réf. 278B**

---

# Original stone farmhouse



## DESCRIPTION

Original **stone farmhouse requiring renovation** with **two tool sheds** and with **9.5 hectares of partially scattered land** set in an hillside position, at 380 meters above sea level, with fabulous views over the valley.

The property, on three levels, consists of :

- entrance hall, living room with fireplace and open plan kitchen opening onto a large panoramic **covered terrace**, hallway, two bedrooms, bathroom with bath and outside store room (former chestnut drying room) on ground floor;
- **terrace**, small room and large attic area where it is possible to build two living spaces on first floor;
- **portico**, cellar and stable on lower ground floor.

## **Central heating (propane gas).**

Access to the property through 1, 5 km of dirt road.

### **DÉTAILS TECHNIQUES**

Surface habitable

280 m<sup>2</sup>

Surface extérieure

350 m<sup>2</sup>

Niveau sonore

0 - zona molto silenziosa

Étages

3

Pièces

3

Chambres

2

Salles de bain

1

Jardin

Oui

Terrain

95350 m<sup>2</sup>

Cour

Oui

Cave

185 m<sup>2</sup>

Garage

36 m<sup>2</sup>

Place de parking

Oui

Terrasse

Oui

Altitude m s.n.m.

380

État

da ristrutturare

Chauffage

Autonomo a gas propano

Vue panoramique

Oui

# Catégorie

G

MESSAGES.PROPERTY\_IMAGES































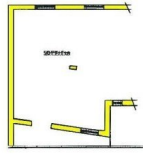




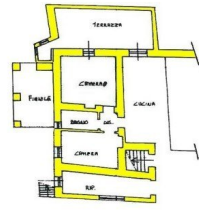




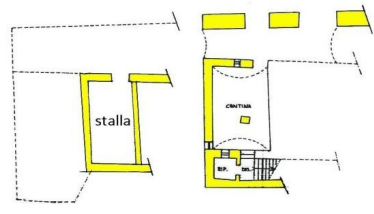




piano primo



piano terra



piano seminterrato

