



LUNIGIANA 2000

real estate

Réf. 281

Stone building requiring restoration



DESCRIPTION

Stone building (60 sq m) **requiring renovaton** with adjacent **land** of 2.540 sq m with amazing panoramic views over the valley set in a very sunny and hillside position at 485 meters above sea level.

The property that can be reached throuhg a dirt road of approximately 600 meters, will be sold including an approved project with the changed of use.

The project involves:

- living room with open plan kitchne on ground floor;
- double bedroom, bathroom with shower and terrace on first floor.

There is a restaurant and a bar at about 600 meters far.

DÉTAILS TECHNIQUES

Surface habitable

40 m²

Surface extérieure

60 m²

Niveau sonore

0 - zona molto silenziosa

Étages

2

Pièces

2

Chambres

1

Salles de bain

1

Terrain

2540 m²

Place de parking

10 m²

Terrasse

6 m²

Altitude m s.n.m.

485

État

da ristrutturare

Chauffage

Inesistente

Vue panoramique

Oui

Catégorie

Esente

MESSAGES.PROPERTY_IMAGES

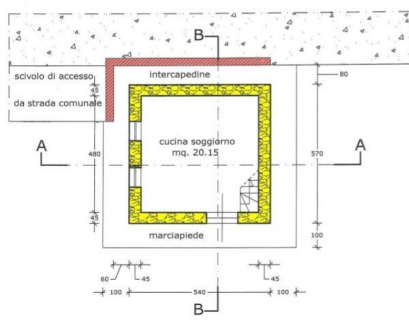




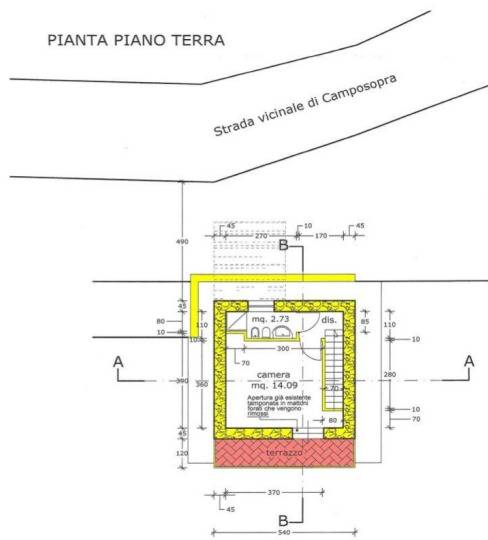


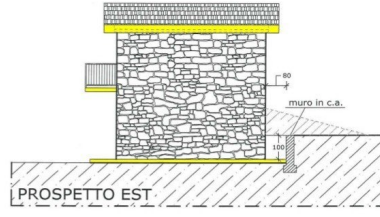
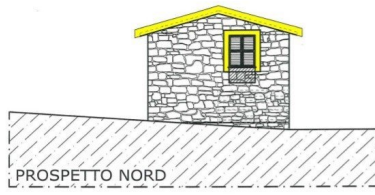


PIANTA PIANO SEMINTERRATO



PIANTA PIANO TERRA





LIMESANA 2000
relazioni

