



LUNIGIANA 2000

real estate

Réf. 064A

Stone country house



DESCRIPTION

Beautiful **country house** which was formerly the summer residence of the Diocese of Pontremoli, dated 1826, with cellars and undercroft dating back to the 1580s.

The house is a former mill, in an elevated position overlooking fields and the River Gordana. It has adjoining **outbuildings** including the old village school.

The **Casa Principale** has 5 double bedrooms and 3 bathrooms and a guest toilet, and a large number of reception rooms, some with historic frescoed ceilings.

The adjoining farm cottage, **Casa Colonica**, has 4 bedrooms, 2 bathrooms, an eat-in kitchen and double height living room.

The farmhouse and the farm cottage share a huge **terrace**, overlooking the valley and the old bridge

over the River Gordana, and there are many fascinating and beautiful **outdoor spaces**, perfect for relaxation, barbecues, summer dinners etc.

The **old school** has been refurbished as an independent apartment with a kitchen and bathroom and a beautiful lofty living space.

The farmhouse has several beautiful **stone barns, not yet converted**, but offering many interesting possibilities for further development.

The property is ideal as a family home or would suit development for some commercial activity, workshops, courses, etc.

The property includes a **swimming pool**, a **triangular shaped garden** with cypress trees and a statue of an angel, a cider apple orchard, a **covered loggia**, a **dining space** with kiwi pergola, grazing **meadows** and **ample parking**.

Central heating (wood boiler)

DÉTAILS TECHNIQUES

Surface habitable

1000 m²

Surface extérieure

1300 m²

Niveau sonore

0 - zona molto silenziosa

Étages

3

Pièces

30

Chambres

10

Salles de bain

7

Terrain

21100 m²

Piscine

Oui

Cave

Oui

Place de parking

Oui

Terrasse

Oui

Balcon

Oui

Portique

Oui

Altitude m s.n.m.

280

État

abitabile

Chauffage

Caldaia a Legna

Vue panoramique

Oui

Catégorie

G

MESSAGES.PROPERTY_IMAGES





























































































































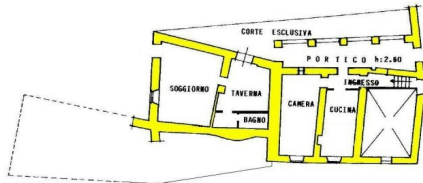




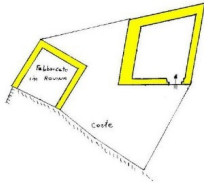




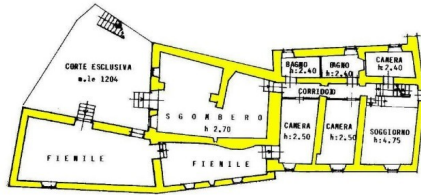
PIANO PRIMO



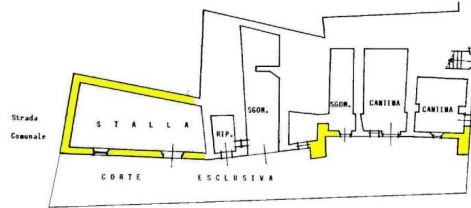
PIANO PRIMO



PIANO TERRA



PIANO TERRA



PIANO PRIMO SOTTOSTRADA

