



# LUNIGIANA 2000

real estate

**Réf. 298A**

---

# Portion of restored house



## DESCRIPTION

**Portion of restored house** set in just 3 km far from the charming medieval village of Bagnone, in an hillside village with amazing panoramic views over the valley.

The property comprises:

- entrance-hall, kitchen, living room, two double bedrooms, single bedrooms, bathroom with shower, toilet and **terrace** on first floor;
- three cellars on lower ground floor.

**Central heating (wood burning stove - electrical boiler for hot water - for cooking it is necessary to use a small gas cylinder).**

**Fully furnished.**

The car must be parked in the public parking which is approximately 80 meters far.

## **DÉTAILS TECHNIQUES**

Surface habitable

120 m<sup>2</sup>

Surface extérieure

155 m<sup>2</sup>

Niveau sonore

0 - zona molto silenziosa

Étages

2

Pièces

5

Chambres

3

Salles de bain

2

Cave

45 m<sup>2</sup>

Terrasse

Oui

Balcon

Oui

Altitude m s.n.m.

465

État

ristrutturato

Chauffage

Stufa a Pellet

Vue panoramique

Oui

Meublé

Oui

## **Catégorie**

G

MESSAGES.PROPERTY\_IMAGES























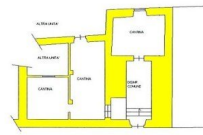








PIANTA PIANO PRIMO



PIANTA PIANO SEMINTERRATO