



LUNIGIANA 2000

real estate

Réf. 308

Portion of family house



DESCRIPTION

Portion of family house on first floor with **courtyard, cellar and a small garden** set in a village where there is a bar, a bakery and the train station.

The property consists of:

- Cellar on ground floor;
- **Terrace, veranda**, entrance hall, living room with fireplace, kitchen with terrace, three double bedrooms, bathroom with shower and partially veranded terrace on first floor.

Central heating (natural gas).

Fully furnished.

Possibility to include a flat vegetable garden of 1.857 sq m which is at approximately 70 metres far

from the house.

DÉTAILS TECHNIQUES

Surface habitable

100 m²

Surface extérieure

130 m²

Niveau sonore

2 - zona abbastanza silenziosa

Source d'eau

Fiume/Torrente

Étages

1

Pièces

5

Chambres

3

Salles de bain

1

Terrain

1857 m²

Cour

120 m²

Cave

13 m²

Place de parking

2 m²

Terrasse

13 m²

Balcon

10 m²

Altitude m s.n.m.

150

État

abitabile

Chauffage

Autonomo a gas metano

Vue panoramique

Oui

Meublé

Oui

Catégorie

G

MESSAGES.PROPERTY_IMAGES

































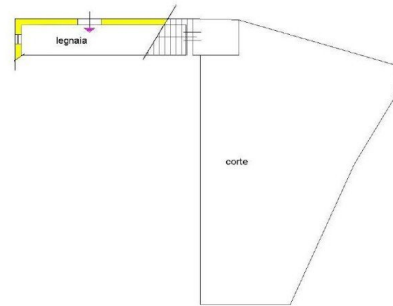








PIANO PRIMO



PIANO TERRA

LUNEGANA 2000
PROGETTO

