



LUNIGIANA 2000

real estate

Réf. 244A

Detached villa



DESCRIPTION

Detached villa (aprox. 300 sq m) with fenced **garden** of 700 sq m and **garage** set in the beautiful medieval town of Pontremoli, where there are amenities, train station and motorway exit.

The property, on two levels, comprises:

- entrance hall, large living room with fireplace, kitchenette with dining area, study, three double bedrooms, two bathrooms, veranda and **two terraces** on ground floor;
- taverna with fireplace and **portico**, three cellars, boiler room, toilet and large garage on lower ground floor.

Central heating (natural gas)

DÉTAILS TECHNIQUES

Surface habitable
300 m²
Surface extérieure
350 m²
Étages
2
Pièces
7
Chambres
4
Salles de bain
3
Jardin
700 m²
Terrain
70 m²
Cave
Oui
Garage
50 m²
Terrasse
Oui
Balcon
Oui
Portique
Oui
Altitude m s.n.m.
260
Classe énergétique
233.84 Kw/h m²
État
abitabile
Chauffage
Autonomo a gas metano

Catégorie

F

MESSAGES.PROPERTY_IMAGES





























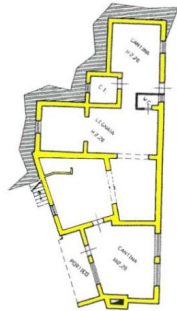




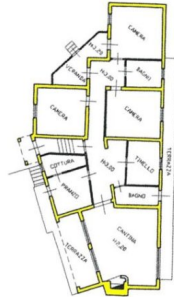








PIANTA PIANO SCINTERRATO



PIANTA PIANO TERRA