



LUNIGIANA 2000

real estate

Réf. 261A

Characteristic stone restored house



DESCRIPTION

Beautiful **stone house** with **two terraces and adjacent garden** set in a charming medieval borgo, in front of a Malaspina castle.

The property has been tastefully restored and comprises:

- entrance hall with store room, hallway with stairwell, kitchen with fireplace, panoramic terrace on which we find a store room and a bathroom with bath on ground floor;
- hall, living room with fireplace opening onto a terrace with amazing panoramic views over the valley and the castle, double bedroom with ensuite with shower on first floor;
- hallway, attic double bedroom with ensuite with shower plus another attic double bedroom on second floor;
- typical taverna, three cellars and terrace on lower ground floor.

The property also includes a **lovely garden and a parking space.**

Central heating (natural gas).

DÉTAILS TECHNIQUES

Surface habitable

190 m²

Surface extérieure

290 m²

Niveau sonore

0 - zona molto silenziosa

Étages

3

Pièces

6

Chambres

3

Salles de bain

3

Jardin

Oui

Terrain

400 m²

Cour

23 m²

Cave

78 m²

Place de parking

3 m²

Terrasse

17 m²

Balcon

12 m²

Altitude m s.n.m.

190

État

abitable

Chauffage

Autonomo a gas metano

Vue panoramique

Oui

Vue sur les Apennins

Oui

Catégorie

G

MESSAGES.PROPERTY_IMAGES

























































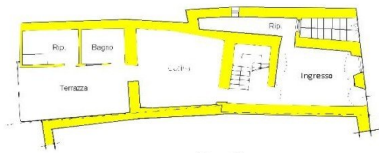








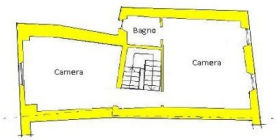




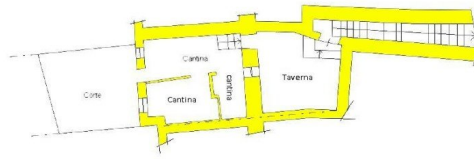
Piano Terra



Piano Primo



Piano Secondo



Piano 1° sottostrada

