



LUNIGIANA 2000

real estate

Réf. 052L

Village house



DESCRIPTION

Village house on three levels set in a borgo with bars, grocery shops, restaurant and train station.

The property comprises:

- cellar and bathroom on ground floor;
- living room and kitchen on first floor;
- two bedrooms on second floor.

Central heating (village network propane tank)

You can park the car at the public parking which is approximately 50 meters far from the house.

DÉTAILS TECHNIQUES

Surface habitable
70 m²
Surface extérieure
83 m²
Niveau sonore
0 - zona molto silenziosa
Étages
3
Pièces
4
Chambres
2
Salles de bain
1
Cave
6 m²
Altitude m s.n.m.
550
État
da ristrutturare
Chauffage
Stufa a Legna

Catégorie

G

MESSAGES.PROPERTY_IMAGES































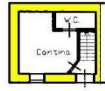




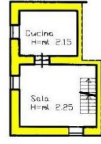








PIANO TERRA



PIANO PRIMO



PIANO SECONDO