



LUNIGIANA 2000

real estate

Réf. 314

Detached house requiring renovation



DESCRIPTION

Detached house to be restored with **two tool sheds** and with **90.271 sq m of partially scattered land**, which is set in an hillside position, at 380 meters above sea level, with amazing views all over the valley.

Its present accomodation offers:

- entrance hall, kitchen, living room openint onto a large **covered terrace**, hall, double bedroom, store room and bathroom with bath on first floor;
- **courtyard**, two store rooms, garage and two rooms used as stable on ground floor.

Central heating (natural gas).

DÉTAILS TECHNIQUES

Surface habitable
180 m²
Surface extérieure
220 m²
Niveau sonore
0 - zona molto silenziosa
Étages
2
Pièces
3
Chambres
2
Salles de bain
1
Terrain
Oui
Cave
Oui
Garage
Oui
Terrasse
Oui
Altitude m s.n.m.
380
Classe énergétique
400.52 Kw/h m²
État
da ristrutturare
Chauffage
Autonome a gas metano
Vue panoramique
Oui
Meublé
Oui

Catégorie

G

MESSAGES.PROPERTY_IMAGES

























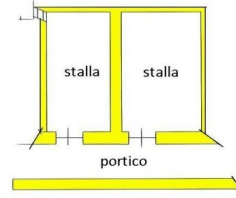
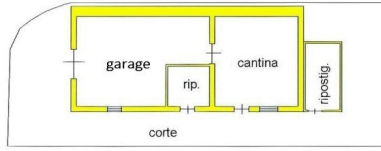
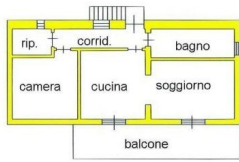




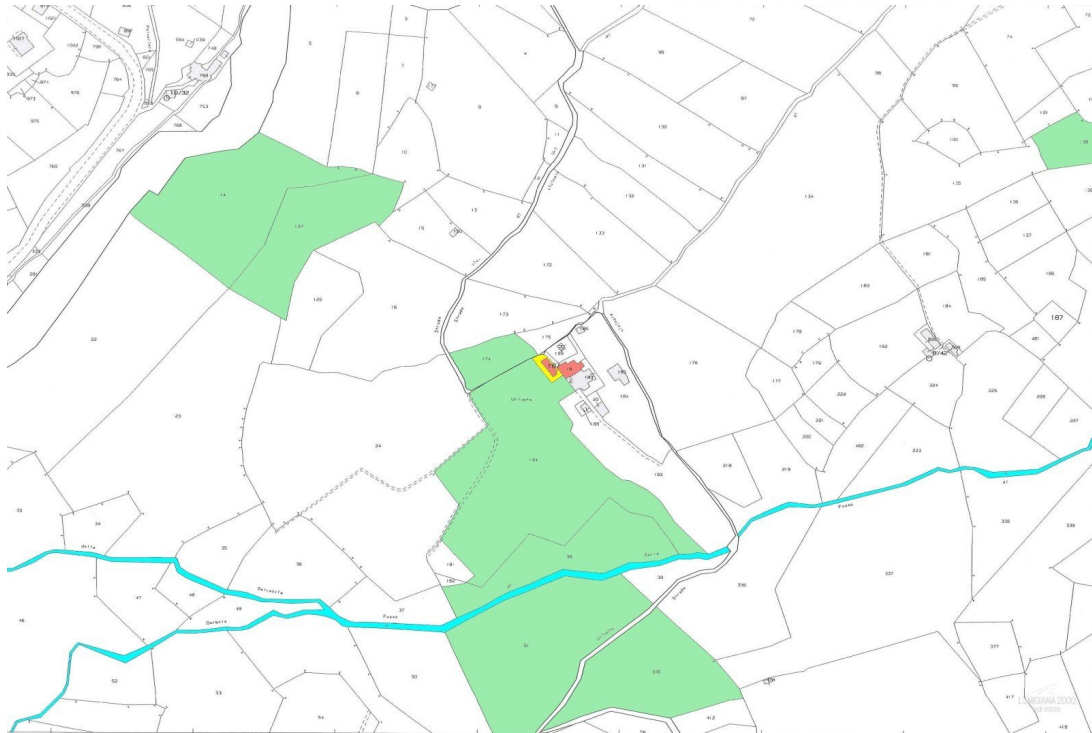








LUMENANA 2000
 nel 2000



LUMENANA 2000
 nel 2000