



LUNIGIANA 2000

real estate

Réf. 315A

Detached house



DESCRIPTION

Detached house on two floors with **courtyard and garden** set at just 6 km far from the beautiful medieval town of Fivizzano where there are shops, restaurants, bars, bakeries, banks and so on .

The property, which has marvellous panoramic views over the Apuan Alps, consists of :

- Kitchen, hall, two double bedrooms, bathroom with bath, cellar and boiler room on ground floor;
- entrance hall, kitchen with fireplace, dining room, hall, two double bedrooms, one of which has a **terrace** and bathroom with bath on first floor.

Central heating (natural gas)

The property also includes an outbuilding uses has tool shed.

DÉTAILS TECHNIQUES

Surface habitable

180 m²

Surface extérieure

255 m²

Niveau sonore

0 - zona molto silenziosa

Source d'eau

Fiume/Torrente

Étages

2

Pièces

8

Chambres

4

Salles de bain

2

Jardin

Oui

Terrain

571 m²

Cour

1535 m²

Cave

27 m²

Place de parking

4 m²

Balcon

9 m²

Altitude m s.n.m.

160

État

abitabile

Vue panoramique

Oui

Catégorie

G

MESSAGES.PROPERTY_IMAGES























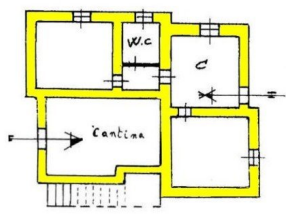




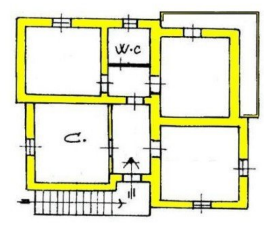








Piano Terra



Piano Primo