



# LUNIGIANA 2000

real estate

**Réf. 332**

---

# Detached villa



## DESCRIPTION

**Detached villa comprising two units** with amazing panoramic views and **garden** set at 580 meters above sea level.

The property, in three levels, consists of:

- living room, kitchen, hall, two double bedrooms, bathroom, boiler room, toilet and large **garage** on ground floor;
- entrance hall, living room with fireplace, open plan kitchen and **two terraces**, three double bedrooms, one of which with ensuite with shower and another bathroom with bath on first floor;
- large attic area with three store rooms on second floor.

**Central heating (wood and oil).**

Double glazing.

## **DÉTAILS TECHNIQUES**

Surface habitable

290 m<sup>2</sup>

Surface extérieure

320 m<sup>2</sup>

Niveau sonore

0 - zona molto silenziosa

Étages

3

Pièces

9

Chambres

5

Salles de bain

4

Jardin

Oui

Terrain

Oui

Cour

Oui

Cave

Oui

Garage

65 m<sup>2</sup>

Place de parking

3 m<sup>2</sup>

Terrasse

Oui

Balcon

Oui

Altitude m s.n.m.

580

État

abitabile

Chauffage

Caldaia a Legna

Vue panoramique

Oui

Vue sur les Apennins

Oui

# Catégorie

G

MESSAGES.PROPERTY\_IMAGES









































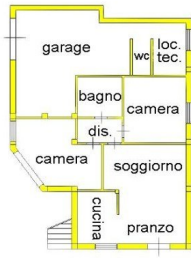




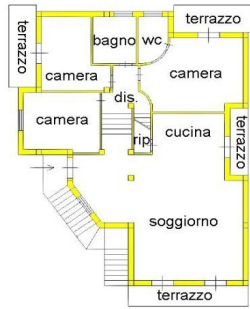




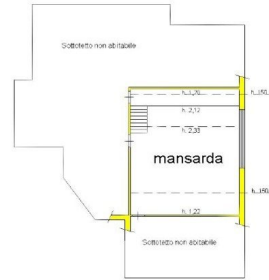




Piano Terra



Piano Primo



Piano Secondo

