



LUNIGIANA 2000

real estate

Réf. 333A

Village house



DESCRIPTION

Village house set in a charming medieval borgo which was a fortified town already known in the Byzantine period .

Its present accommodation offers:

- cellar on ground floor;
- hall, living room and kitchen with **balcony** on first floor;
- hallway, two double bedrooms, one of which has a **balcony** and bathroom with bath on second floor.

Central heating (natural gas)

Fully furnished.

You can park the car in front of the house.

DÉTAILS TECHNIQUES

Surface habitable

105 m²

Surface extérieure

150 m²

Niveau sonore

0 - zona molto silenziosa

Étages

3

Pièces

4

Chambres

2

Salles de bain

1

Cave

11 m²

Terrasse

4 m²

Balcon

4 m²

Altitude m s.n.m.

220

État

abitable

Chauffage

Autonomo a gas metano

Meublé

Oui

Catégorie

G

MESSAGES.PROPERTY_IMAGES

























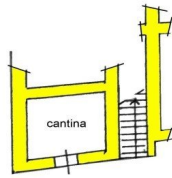




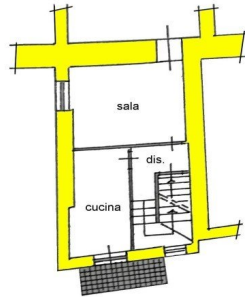




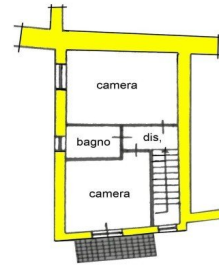




PT



P1



P2