



LUNIGIANA 2000

real estate

Réf. 431

Detached stone house dating back to 1845



DESCRIPTION

Detached stone house dating back to 1845 with **courtyard** of 95 sq m, situated in a medieval village close to shops and facilities.

- Three cellars on lower ground floor;
- living room, kitchen, dining room, room, old chestnut drying room with oven, two bathrooms and **terrace** on ground floor;
- living room with fireplace and four double bedrooms on first floor.

Price is not negotiable!

DÉTAILS TECHNIQUES

Surface habitable

320 m²

Surface extérieure
450 m²
Niveau sonore
0 - zona molto silenziosa
Source d'eau
Fiume/Torrente
Étages
3
Pièces
10
Chambres
4
Salles de bain
2
Jardin
Oui
Cour
95 m²
Cave
Oui
Terrasse
Oui
Altitude m s.n.m.
500
Classe énergétique
209.88 Kw/h m²
État
abitabile
Chauffage
Inesistente
Vue panoramique
Oui

Catégorie

G

MESSAGES.PROPERTY_IMAGES























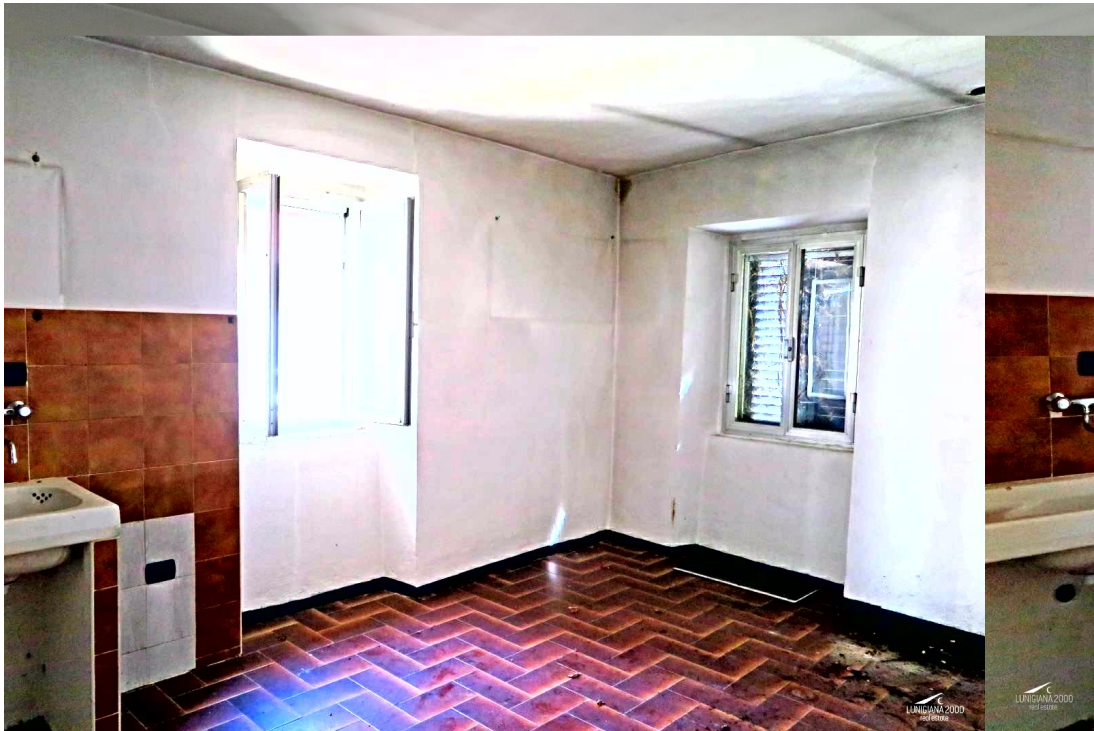














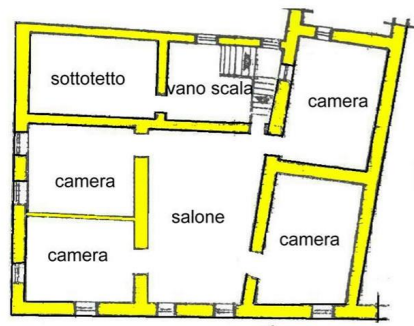




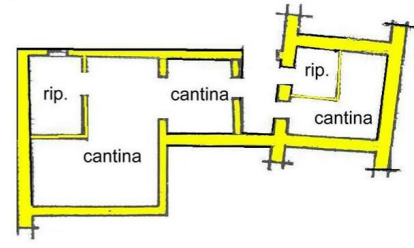




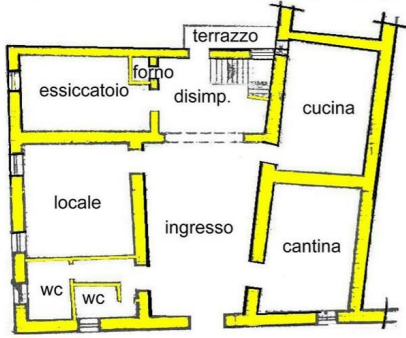




piano primo



piano seminterrato



piano terra