



# LUNIGIANA 2000

real estate

**Réf. 384A**

---

# Detached house



## DESCRIPTION

**Detached villa** surrounded by the nature with marvellous views and with over 17.500 sq m of adjacent **land** set at 400 metres above sea level.

The property, in excellent condition, consists of:

- Entrance hall, kitchen, double bedroom and bathroom with shower, cellar and **garage** on ground floor;
- Large entrance hall, living room with **terrace** with panoramic views, kitchen, hallway, four double bedrooms, one of which has a **terrace** and two bathrooms with shower on first floor.

**Central heating (wood boiler and propane gas)**

**On the land there are fruit trees, olive groves and woodland.**

Possibility to build a swimming pool.

Good solution both for residential house as well as accommodation business

## **DÉTAILS TECHNIQUES**

Surface habitable

250 m<sup>2</sup>

Surface extérieure

330 m<sup>2</sup>

Niveau sonore

0 - zona molto silenziosa

Étages

2

Pièces

8

Chambres

5

Salles de bain

3

Jardin

Oui

Terrain

17727 m<sup>2</sup>

Cour

400 m<sup>2</sup>

Cave

36 m<sup>2</sup>

Garage

42 m<sup>2</sup>

Place de parking

Oui

Terrasse

Oui

Balcon

Oui

Altitude m s.n.m.

400

État

abitabile

Chauffage

Caldaia a Legna

Vue panoramique

Oui

# Catégorie

G

MESSAGES.PROPERTY\_IMAGES



















































L'UNIVERSITÀ 2000  
red estate



L'UNIVERSITÀ 2000  
red estate



















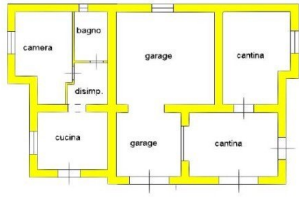




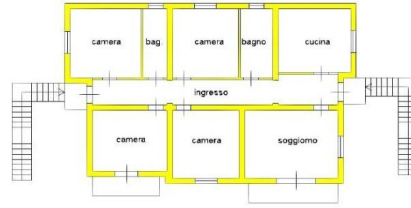








PIANO TERRA h. 2.80



PIANO PRIMO h. 2.90

