



LUNIGIANA 2000

real estate

Réf. 059L

Typical stone village house with



DESCRIPTION

Typical **stone village house** with pergola and cellars set in a charming borgo with amazing views over the Apuan Alps, at 460 metres above sea level.

Its present accomodation offers:

- Two cellars and laundry room on ground floor;
- **Terrace with pergola**, kitchen, living room with dining area, kitchen and bathroom on first floor;
- Three bedrooms and bathroom on second floor.

Central heating (gas or fireplace which works with pellet)

You can park the car in front of the property.

DÉTAILS TECHNIQUES

Surface habitable

90 m²

Surface extérieure

120 m²

Niveau sonore

1 - zona silenziosa

Étages

3

Pièces

6

Chambres

3

Salles de bain

2

Cave

Oui

Terrasse

4 m²

Portique

4 m²

Altitude m s.n.m.

460

État

ristrutturato

Chauffage

Caldaia a pellet

Catégorie

G

MESSAGES.PROPERTY_IMAGES





























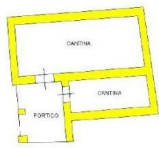




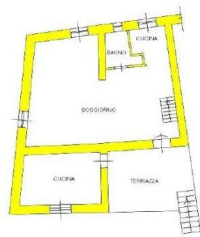




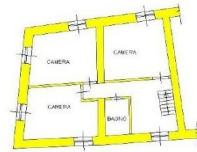




PIANO TERRA



PIANO PRIMO



PIANO SECONDO