



LUNIGIANA 2000

real estate

Réf. 391A

Beautiful detached villa



DESCRIPTION

Beautiful detached villa with surrounding **land** of 1.328 sq m, **two garages and a storage** situated in Fivizzano, which is charming medieval town with amenities.

The property consists of:

- attic room, hall, bedroom and bathroom with shower on first floor;
- **portico, two terraces**, entrance hall, study, large living room with fireplace and **terrace**, dining room, kitchenette, hall, two double bedrooms and bathroom with bath on ground floor;
- stairwell, four cellars and garage on lower ground floor;
- another garage with store room on ground floor

The villa is characterized thanks to valuable peculiarities such as a large **handcrafted fireplace** with piers and a long architrave, which is a **unique handcrafted piece in sandstone** extracted

from local quarries; a large **handcrafted staircase** integrally **made of walnut wood**; **olive wood parquet floor**; **terracotta floor**; a **glass door with wooden frames** and a main **entrance door in locally crafted wood**.

Central heating (natural gas).

DÉTAILS TECHNIQUES

Surface habitable

340 m²

Surface extérieure

425 m²

Niveau sonore

1 - zona silenziosa

Étages

3

Pièces

8

Chambres

3

Salles de bain

2

Jardin

Oui

Terrain

1328 m²

Cour

Oui

Cave

85 m²

Garage

50 m²

Place de parking

Oui

Terrasse

40 m²

Balcon

Oui

Portique

5 m²

Altitude m s.n.m.

330

État

abitabile

Chauffage

Autonomo a gas metano

Vue panoramique

Oui

Vue sur les Apennins

Oui

Catégorie

G

MESSAGES.PROPERTY_IMAGES















































































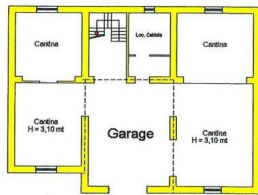




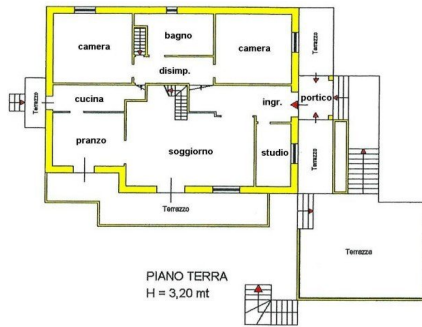




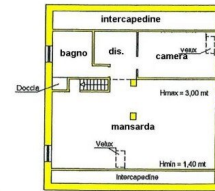




PIANO PRIMO SEMINTERRATO
H = 3,40 mt



PIANO TERRA
H = 3,20 mt



PIANO PRIMO
Soffitta - hm = 2,20 mt

Agenzia del Territorio
CATASTO FABBRICATI
Ufficio Provinciale di
Massa

Foglia n. 1
Scala 1:100

