



LUNIGIANA 2000

real estate

Réf. 393A

Portion of stone semi-detached house



DESCRIPTION

Portion of semi-detached stone house of the late nineteenth century with large adjacent **garden** which is set in an hillside and sunny position, with marvellous views over the Apuan Alps.

The property, on two levels, have some valuable characteristic features, and comprises:

- entrance-dining room with fireplace, vaulted kitchen, living room with frescoed ceiling, hall, three double bedrooms, three bathrooms, small veranda and south-facing **terrace** of 15 sq m connected with the garden on first floor;
- courtyard with shared parking space and passage in common, two store rooms and three cellars opening onto the garden on ground floor.

Central heating (natural gas).

The property also includes **exclusive parking spaces adjacent to the olive grove of approximately 50 sqm , a chestnut grove and two woods and other land.**

Possibility to separately purchase a productive olive grove just a few steps from the house.

DÉTAILS TECHNIQUES

Surface habitable

130 m²

Surface extérieure

195 m²

Niveau sonore

0 - zona molto silenziosa

Étages

2

Pièces

6

Chambres

3

Salles de bain

3

Jardin

298 m²

Terrain

1670 m²

Cave

70 m²

Place de parking

3 m²

Terrasse

15 m²

Altitude m s.n.m.

260

État

abitabile

Chauffage

Autonomo a gas metano

Vue panoramique

Oui

Vue sur les Alpes Apuanes

Oui

Vue sur les Apennins

Oui

Catégorie

G

MESSAGES.PROPERTY_IMAGES































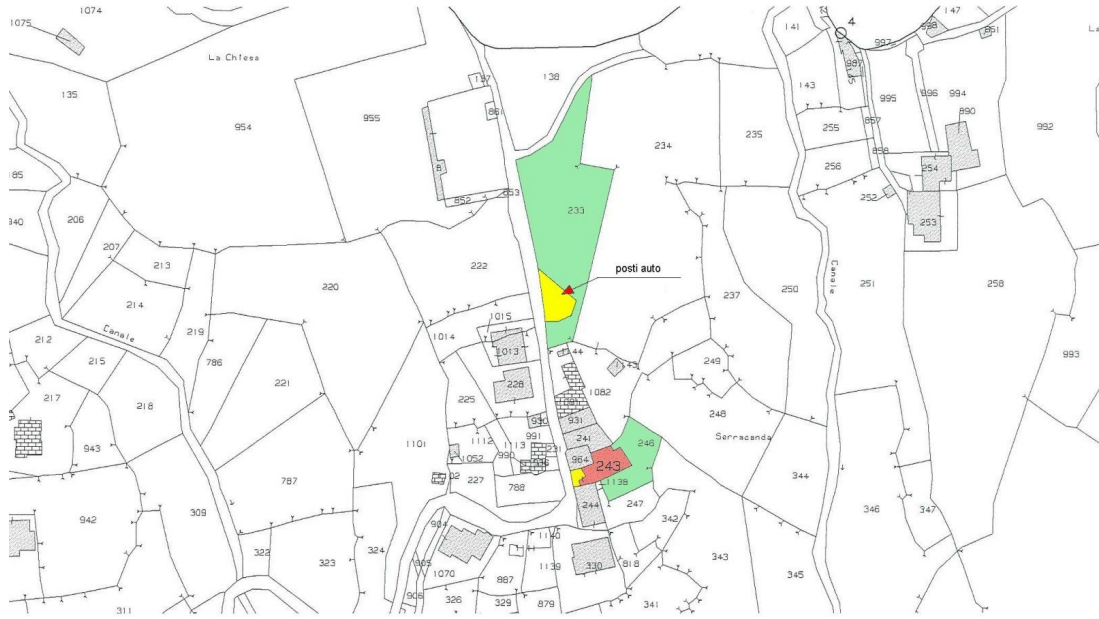




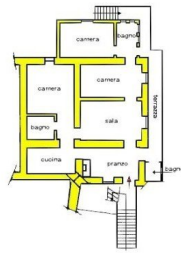




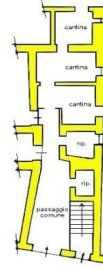




LUMENANA 2000
 nel 2000



piano primo



piano terra

LUMENANA 2000
 nel 2000