



LUNIGIANA 2000

real estate

Réf. 397A

Typical stone farmhouse



DESCRIPTION

Typical **stone farmhouse** with two large panoramic **terraces** and adjacent **land** of approximately 1 hectares set in a small village, just 5 km far from motorway exit and train station.

The property is accessed from two pedestrian entrances and a driveway.

The property comprises two units on first floor:

- Large stone flagged terrace, entrance-living room with fireplace, kitchen, hall, two double bedrooms, single bedroom and bathroom with bath (apartment n.1);
- Terrace with a small outbuilding on it, **portico**, entrance hall, living room with fireplace, kitchen, hallway, three double bedrooms, store room and bathroom with bath (apartment n.2);
- Characteristic **portico**, two rooms (taverna), toilet, two cellars, wood shed, store room and two other large rooms under the terrace on ground floor.

All the rooms on ground floor have vaulted ceilings.

Central heating (propane gas)

Possibility to build a pool.

DÉTAILS TECHNIQUES

Surface habitable

300 m²

Surface extérieure

350 m²

Niveau sonore

0 - zona molto silenziosa

Étages

2

Pièces

10

Chambres

6

Salles de bain

3

Terrain

10045 m²

Cour

84 m²

Cave

30 m²

Place de parking

5 m²

Terrasse

50 m²

Portique

50 m²

Altitude m s.n.m.

300

État

abitabile

Chauffage

Autonomo a gas propano

Vue panoramique

Oui

Vue sur les Apennins

Oui

Catégorie

G

MESSAGES.PROPERTY_IMAGES

































































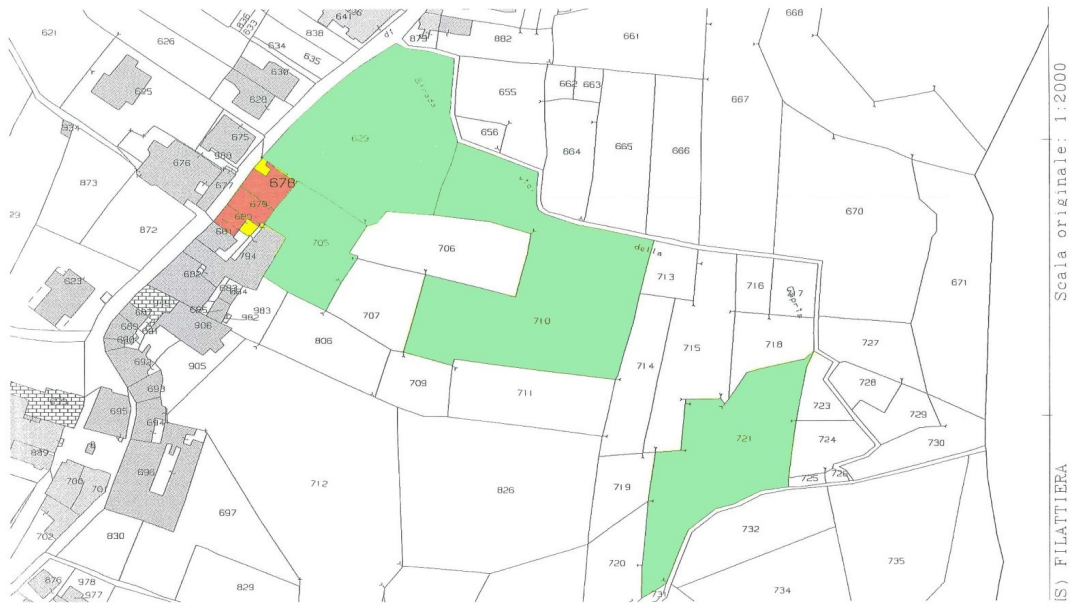




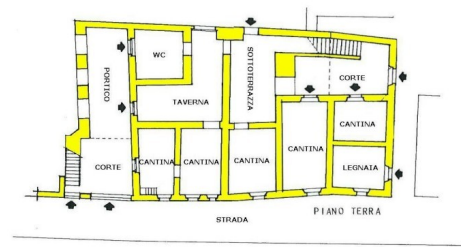
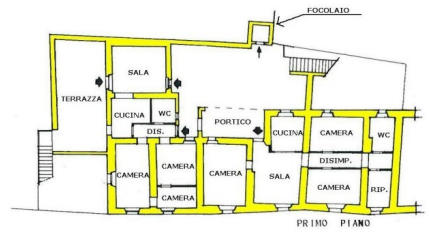








LUMENANA 2000
PER PROGETTO



LUMENANA 2000
PER PROGETTO