



# LUNIGIANA 2000

real estate

**Réf. 400A**

---

# Detached house



## DESCRIPTION

**Detached house** divided into two apartments with stunning panoramic views over the valley and the Apennines, set in a private and peaceful location, surrounded by greenery and **land** of its own.

The property is arranged over three levels and is composed as follows:

- **Basement level:** garage, cellar, storage room boiler room and portico.
- **Raised ground floor:** entrance hall, bright living room with kitchenette and access to a large panoramic **terrace**, two bedrooms, two bathrooms (both with shower), and staircase.
- **First floor:** entrance hall, living room with **terrace**, two bedrooms, and two bathrooms

(one with bathtub and one with shower).

### **Central heating (propane gas).**

The two flats have a private access, but they are also connected by internal staircase, making it ideal both as a main residence and as a two-family home or investment opportunity.

### **DÉTAILS TECHNIQUES**

Surface habitable

195 m<sup>2</sup>

Surface extérieure

238 m<sup>2</sup>

Étages

3

Pièces

7

Chambres

4

Salles de bain

4

Terrain

1300 m<sup>2</sup>

Cave

26 m<sup>2</sup>

Garage

Oui

Place de parking

1 m<sup>2</sup>

Terrasse

26 m<sup>2</sup>

Portique

22 m<sup>2</sup>

Altitude m s.n.m.

590

État

abitabile

Chauffage

Autonomo a gas propano

Vue panoramique

Oui

Meublé

Oui

# Catégorie

G

MESSAGES.PROPERTY\_IMAGES

































































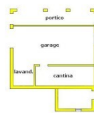




**piano rialzato**



**piano primo**



**piano seminterrato**

