



# LUNIGIANA 2000

real estate

**Réf. 402A**

---

# Detached house



## DESCRIPTION

**Detached house** (80 sq m) with **garden** of 263 sq m set in lovely hamlet at 490 meters above sea level with marvellous views over the majestic Apuan Alps and close to the beautiful medieval town of Fivizzano.

The property, on only one floor, comprises:

- **courtyard**, entrance hall, living room, kitchen, two bedrooms, bathroom with bath, store room and cellar;
- former stable and barn (now used as storage) of 70 sq m on two levels.

**Central heating (wood burning stove)**

You can reach the house by car

## DÉTAILS TECHNIQUES

Surface habitable

125 m<sup>2</sup>

Surface extérieure

160 m<sup>2</sup>

Niveau sonore

0 - zona molto silenziosa

Étages

1

Pièces

4

Chambres

2

Salles de bain

1

Jardin

263 m<sup>2</sup>

Cour

137 m<sup>2</sup>

Cave

10 m<sup>2</sup>

Altitude m s.n.m.

495

État

abitabile

Chauffage

Stufa a Legna

Vue panoramique

Oui

Vue sur les Alpes Apuanes

Oui

Meublé

Oui

## Catégorie

G

MESSAGES.PROPERTY\_IMAGES



















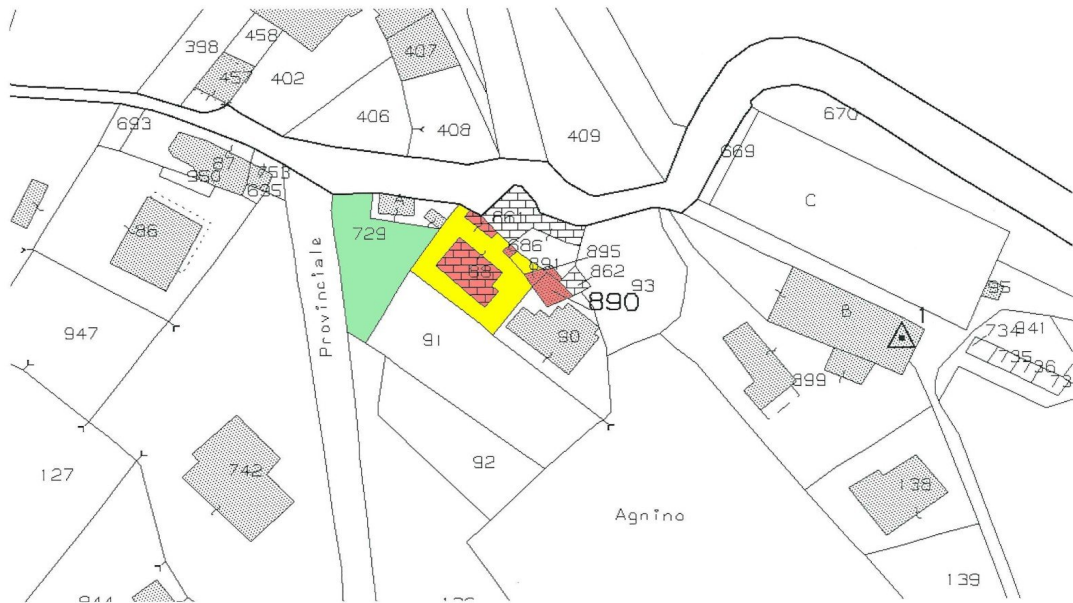


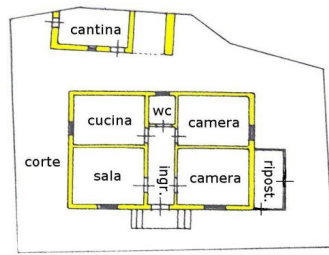




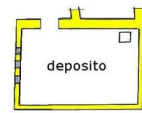




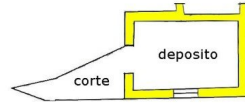




**piano terra**



**piano primo**



**piano terra**