



LUNIGIANA 2000

real estate

Réf. 622B

Historic Stone House



DESCRIPTION

Characteristic **historic stone house**, full of charm and featuring original architectural elements such as vaulted ceilings and a masonry fireplace situated in the charming village of Corvarola, nestled in the peaceful hills of Lunigiana.

The property is spread over multiple levels and comprises:

- **Ground floor:** entrance hall, spacious living room with fireplace, kitchen with direct access to a **terrace**, three bedrooms, a bathroom with bath, and a storage room.
- **Attic floor:** two rooms to be renovated, ideal as a study or additional bedrooms, and two convenient storage spaces.

The house is liveable but **requires renovation work and the installation of a heating**

system.

Perfect for those seeking a charming residence, a second home in an authentic setting, or a property to enhance for tourist or hospitality use.

Quiet and panoramic location, ideal for those who love nature, tranquillity, and the beauty of Tuscany's historic villages.

DÉTAILS TECHNIQUES

Surface habitable

110 m²

Surface extérieure

175 m²

Niveau sonore

1 - zona silenziosa

Étages

2

Pièces

6

Chambres

3

Salles de bain

1

Cour

25 m²

Altitude m s.n.m.

250

État

abitabile

Chauffage

Termo-Camino

Vue panoramique

Oui

Vue sur les Alpes Apuanes

Oui

Vue sur les Apennins

Oui

Meublé

Oui

Catégorie

G

MESSAGES.PROPERTY_IMAGES



































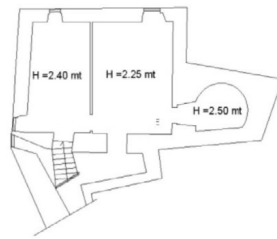








PIANO TERRA



PIANO PRIMO