



LUNIGIANA 2000

real estate

Réf. 625B

Stone village house



DESCRIPTION

Stone village house on three levels ideal for those seeking peace.

Its present accommodation offers:

- Ground floor: entrance into a bright living area with open-plan kitchen and bathroom.
- First floor: two bedrooms, both with direct access to a spacious panoramic **terrace**.
- Lower ground floor: large cellar, perfect as a utility room or hobby space.

The property features **central natural gas heating** and the house is suitable both as a main home and as a holiday home.

It is possible to park the car at approximately 70 meters far from the house

DÉTAILS TECHNIQUES

Surface habitable

80 m²

Surface extérieure

100 m²

Niveau sonore

1 - zona silenziosa

Étages

3

Pièces

3

Chambres

2

Salles de bain

1

Cour

20 m²

Cave

10 m²

Terrasse

5 m²

Altitude m s.n.m.

485

État

abitabile

Chauffage

Autonomo a gas metano

Vue panoramique

Oui

Catégorie

G

MESSAGES.PROPERTY_IMAGES































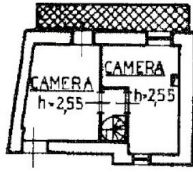








PIANO PRIMO



PIANO TERRA



PIANO PRIMO
SOTTOSTRADA

