



LUNIGIANA 2000

real estate

Réf. 627B

Tower house



DESCRIPTION

Characteristic **tower house** on several levels, featuring traditional finishes and a magnificent panoramic terrace overlooking the village's renowned medieval tower set in an historic village, within a highly prestigious medieval setting.

Ground Floor

Entrance with internal wooden staircase, an original architectural element connecting the upper floors and providing vertical continuity throughout the building.

First Floor

Landing with continuation of the wooden staircase, maintaining stylistic coherence with the historic character of the house.

Second Floor

Access to the living area, consisting of:

bright living room, kitchen, bathroom and a bedroom.

The interiors reflect the typical features of traditional stone houses found in the villages of Lunigiana, offering charming views.

Third Floor

Room used as a study, with direct access to the large **panoramic terrace**. From here, one can enjoy views over the entire village.

DÉTAILS TECHNIQUES

Surface habitable

120 m²

Surface extérieure

160 m²

Étages

4

Pièces

4

Chambres

1

Salles de bain

1

Terrasse

50 m²

Altitude m s.n.m.

335

État

ristrutturato

Chauffage

Autonome a gas metano

Vue panoramique

Oui

Meublé

Oui

Catégorie

G

MESSAGES.PROPERTY_IMAGES































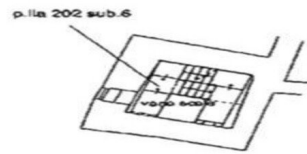




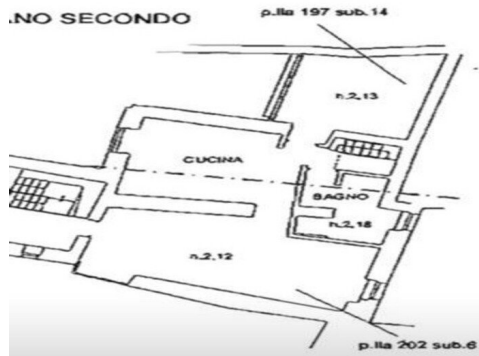
PIANO TERRENO



PIANO PRIMO



PIANO SECONDO



PIANO TERZO

