



# LUNIGIANA 2000

real estate

**Réf. 632B**

---

# Terraced House



## DESCRIPTION

**Semi-detached house** free on three side with adjacent **land of 1.270 sqm**, ideal for those seeking peace and contact with nature set in a beautiful hillside and sunny position with stunning panoramic views

The property is arranged over three levels and is composed as follows:

### **First Floor:**

Large **terrace** with open views over the hills, entrance, kitchen, living room, bathroom with shower, double bedroom and small veranda.

### **Second Floor:**

Spacious landing, two double bedrooms, single bedroom and bathroom with bathtub.

**Ground Floor:**

- Windowed cellar, ideal as a utility or storage space

The roof in good condition, no urgent work needed

**Central heating (natural gas)**

A perfect solution as a first home or holiday residence, for those who wish to live surrounded by nature but not far from essential services.

**DÉTAILS TECHNIQUES**

Surface habitable

190 m<sup>2</sup>

Surface extérieure

230 m<sup>2</sup>

Niveau sonore

1 - zona silenziosa

Étages

3

Pièces

5

Chambres

3

Salles de bain

2

Jardin

1200 m<sup>2</sup>

Terrain

1200 m<sup>2</sup>

Cour

Oui

Cave

Oui

Terrasse

10 m<sup>2</sup>

Altitude m s.n.m.

110

État

abitabile

Chauffage

Autonomo a gas metano

Vue panoramique

Oui

## **Catégorie**

G

**MESSAGES.PROPERTY\_IMAGES**





























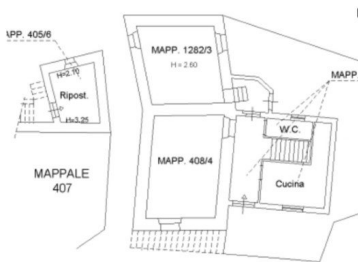




PIANO PRIMO SOTTOSTRADA



PIANO TERRA



PIANO PRIMO

