



LUNIGIANA 2000

real estate

Réf. 072L

Stone house



DESCRIPTION

Typical **stone house** on three levels featuring a **stone flagged courtyard and a large adjacent garden** set in the heart of a charming medieval village, renowned for its historic Malaspina castle.

The property is laid out as follows:

Ground floor - First apartment

- Kitchen with fireplace, living room, bedroom and bathroom with shower

First floor - Second apartment

- Entrance hall, kitchen with **balcony**, bathroom with bathtub, living room and two bedrooms

Ground floor (garden level)

- Two rooms currently used as cellars and a large garden directly connected to the property, ideal for outdoor living, a vegetable garden, or a relaxation area.

Central heating (natural gas)

Thanks to its division into two private apartments, the property is perfectly suited as a main residence, holiday home or solution for two families, set in the authentic and unspoiled atmosphere of Lunigiana.

The public parking is approximately 60 meters far.

DÉTAILS TECHNIQUES

Surface habitable

180 m²

Surface extérieure

210 m²

Niveau sonore

2 - zona abbastanza silenziosa

Étages

3

Pièces

5

Chambres

3

Salles de bain

2

Jardin

600 m²

Terrain

600 m²

Cave

60 m²

Terrasse

30 m²

Balcon

5 m²

Altitude m s.n.m.

360

État

ristrutturato

Chauffage

Autonome a gas metano

Vue panoramique

Oui

Meublé

Oui

Catégorie

G

MESSAGES.PROPERTY_IMAGES





























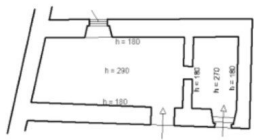




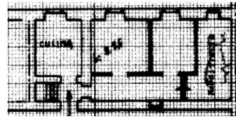




PIANO SEMINTERRATO



PIANO TERRA



PIANO PRIMO

