



LUNIGIANA 2000

real estate

Réf. 352B

Raised - ground - floor apartment



DESCRIPTION

Raised-ground-floor apartment set within a building of only four residential units in a convenient and well-served location, in the heart of the medieval town of Pontremoli. The area is rich in shops and services and is perfectly connected thanks to the nearby railway station and motorway exit.

The spacious and well-laid-out property comprises an entrance hall, a large living room, a kitchen, three double bedrooms, two bathrooms (one with a shower and one with a bathtub), and a practical storage room.

The property is completed by a **cellar** situated on the basement level. The apartment has central heating (natural gas), new installations, and double-glazed windows, ensuring comfort and energy efficiency.

Two private parking spaces are included in the property, a valuable feature for the area.

An ideal solution for families or for those seeking a peaceful living environment without giving up the convenience of nearby services.

DÉTAILS TECHNIQUES

Surface habitable

120 m²

Surface extérieure

150 m²

Étages

2

Pièces

5

Chambres

2

Salles de bain

2

Cave

15 m²

Place de parking

2 m²

Altitude m s.n.m.

236

État

ristrutturato

Chauffage

Autonomo a gas metano

MESSAGES.PROPERTY_IMAGES









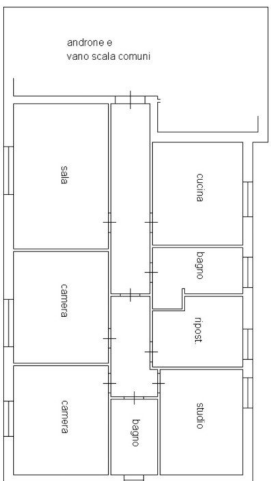




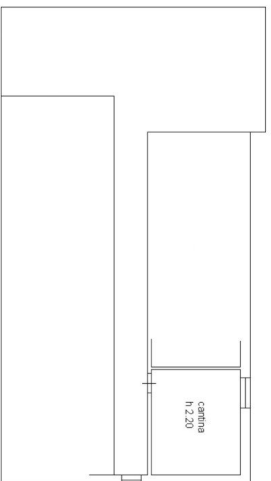








PIANO TERRA
N. 3.20



PIANO PRIMO SOTTOSTRADA

