



# LUNIGIANA 2000

real estate

**Réf. 368B**

---

# Beautiful detached restored stone house



## DESCRIPTION

In a quiet location surrounded by greenery, tastefully **restored stone farmhouse with porch and large private land** .set close to the charming medieval village of Bagnone where there are amenities

The property is arranged over two levels and comprises:

**Ground floor:**  
**porch**, large kitchen, living room and bathroom.

**First floor:**  
spacious living room with fireplace, three bedrooms and bathroom.

From the living room on the first floor there is access to a **large terrace**, which can also be reached

via an external staircase, ideal for outdoor dining and relaxing moments.

The property is surrounded by **land and woodland with a total surface of approximately 10,929 sqm.**

An ideal solution for those looking for an authentic stone farmhouse, immersed in nature and perfect both as a main residence or a holiday home.

### **DÉTAILS TECHNIQUES**

Surface habitable

250 m<sup>2</sup>

Surface extérieure

320 m<sup>2</sup>

Niveau sonore

0 - zona molto silenziosa

Étages

2

Pièces

6

Chambres

3

Salles de bain

2

Jardin

10900 m<sup>2</sup>

Terrain

10900 m<sup>2</sup>

Place de parking

10 m<sup>2</sup>

Terrasse

20 m<sup>2</sup>

État

ristrutturato

Chauffage

Autonomo a gas metano

Vue sur les Apennins

Oui

Meublé

Oui

### **Catégorie**

G

MESSAGES.PROPERTY\_IMAGES











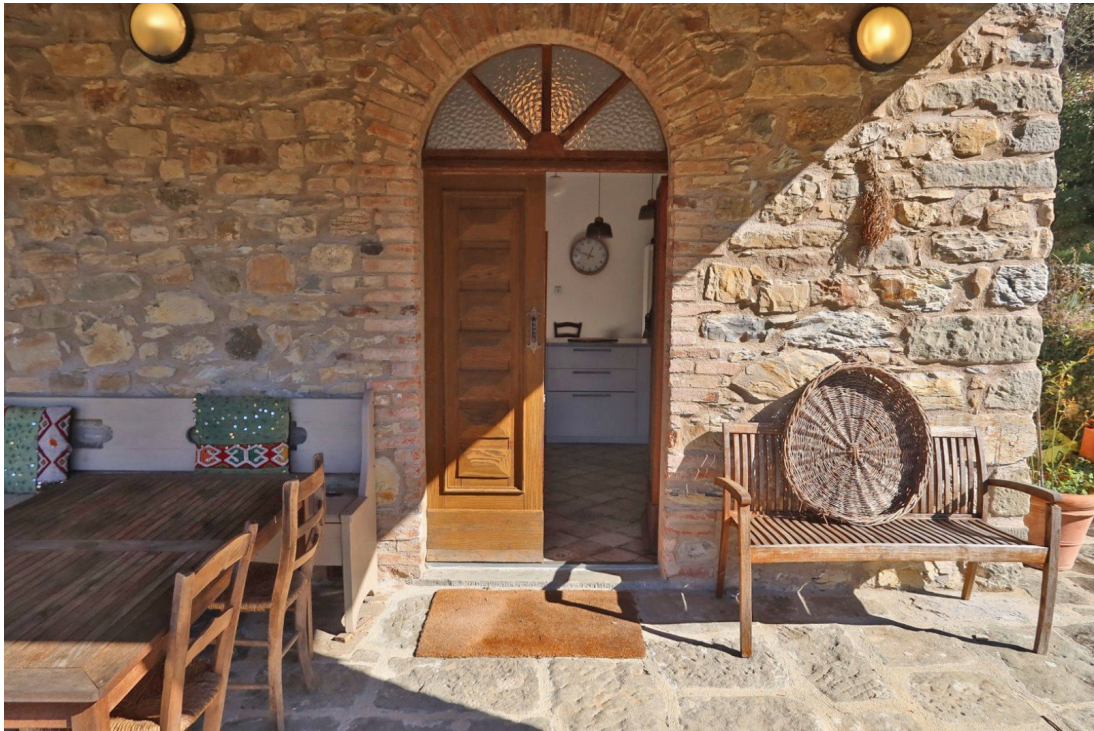
































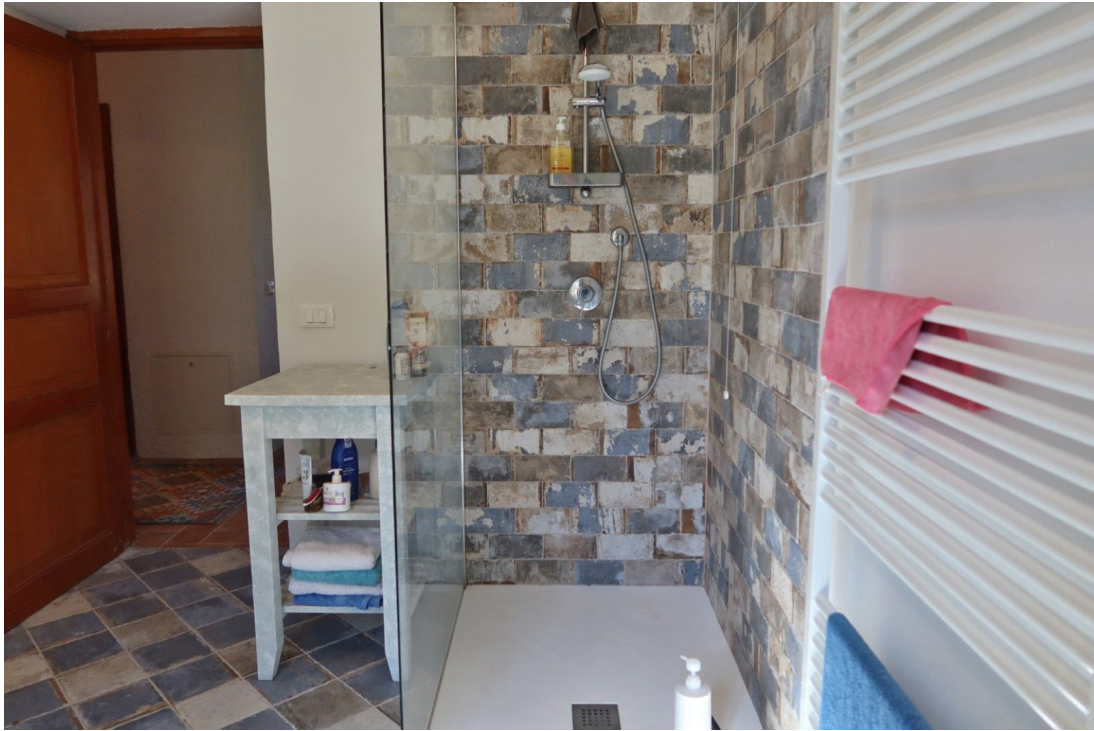






















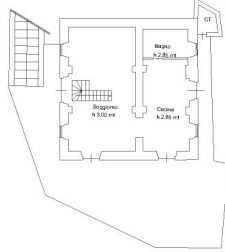








PIANTA PIANO TERRA



PIANTA PIANO PRIMO

H= 3,30 mt

