



# LUNIGIANA 2000

real estate

**Réf. 334**

---

# Restored stone farmhouse with 14 hectares of land



## DESCRIPTION

Superbly **restored unique historic stone property** (900 sq m) surrounded by 14 hectares of **land**, situated in commanding position with amazing views.

The property consists of :

**A)** Large farmhouse comprising 3 flats, porch and 6 cellars

- **1.** entrance hall, dining room with open plan kitchen, living room, three bedrooms, kitchen, laundry room and three bathrooms
- **2.** dining room with open plan kitchen, sitting room, study, sitting area, two bedrooms and bathroom

- **3.** entrance hall, living room with open plan kitchen, bedroom and bathroom

**B)** barn /stable on two floors

**C)** outbuilding with oven and stone flagged **courtyard**

### **DÉTAILS TECHNIQUES**

Surface habitable

700 m<sup>2</sup>

Surface extérieure

900 m<sup>2</sup>

Niveau sonore

0 - zona molto silenziosa

Étages

3

Pièces

14

Chambres

6

Salles de bain

5

Jardin

145000 m<sup>2</sup>

Terrain

145000 m<sup>2</sup>

Cave

6 m<sup>2</sup>

Place de parking

5 m<sup>2</sup>

Altitude m s.n.m.

400

État

ristrutturato

Chauffage

Autonome a gas propano

Vue panoramique

Oui

### **Catégorie**

G

MESSAGES.PROPERTY\_IMAGES

















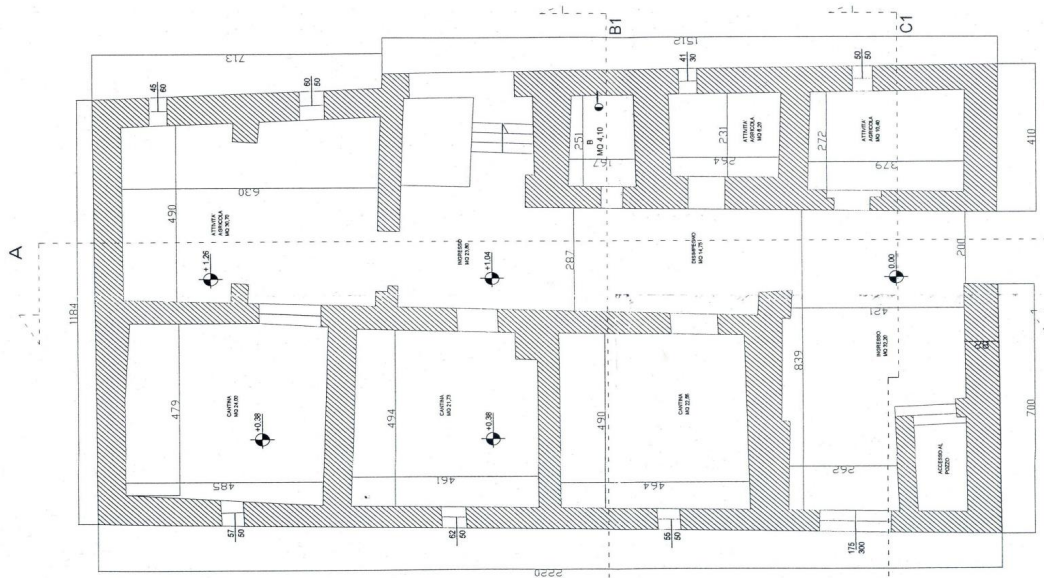
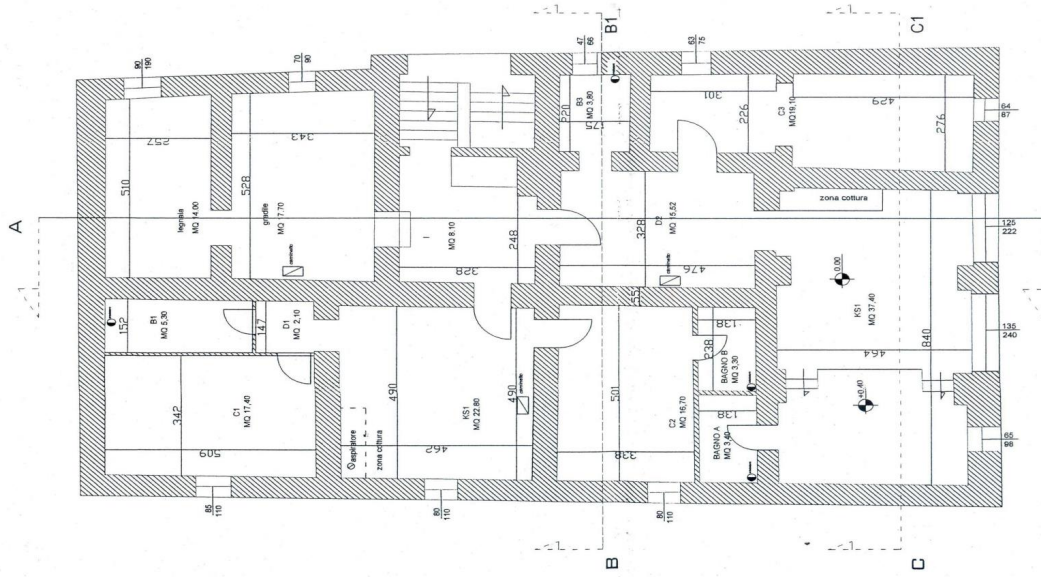








PIANTA PIANO PRIMO



PIANTA PIANO TERRA - CANTINE