



LUNIGIANA 2000

real estate

Réf. 842

Old original stone mill



DESCRIPTION

Old original stone mill (315 sq m) with **stone barn** (35 sq m) and 4.262 sq m of **land** situated just 300 m. above sea level, in a pleasant, sunny and private location , surrounded by woodland and meadows and bordering with a picturesque stream.

The property consists of:

- entrance hall, taverna , kitchen, store room and stairwell on ground floor;
- hallway, three bedrooms all of them with terraces, bathroom and staircase leading to the attic area on first floor (right wing);
- dining room, living room with **terrace**, kitchen (which can be accessed by external staircase) and bathroom on first floor (left wing).

The old mill has two arched niches where once the water was running the horizontal wheel on lower

ground floor and entrance hall, store room and two rooms for the millstones which are still there on first floor.

The property includes a 6 kW photovoltaic system.

Central heating (propane gas and pellet stove).

DÉTAILS TECHNIQUES

Surface habitable

260 m²

Surface extérieure

350 m²

Niveau sonore

0 - zona molto silenziosa

Source d'eau

Fiume/Torrente

Étages

3

Pièces

14

Chambres

3

Salles de bain

2

Jardin

4000 m²

Terrain

4000 m²

Cave

Oui

Place de parking

5 m²

Terrasse

Oui

Balcon

Oui

Altitude m s.n.m.

285

Classe énergétique

273.63 Kw/h m²

État

abitabile

Chauffage

Autonomo a gas propano

Vue panoramique

Oui
Meublé
Oui

Catégorie

G

MESSAGES.PROPERTY_IMAGES

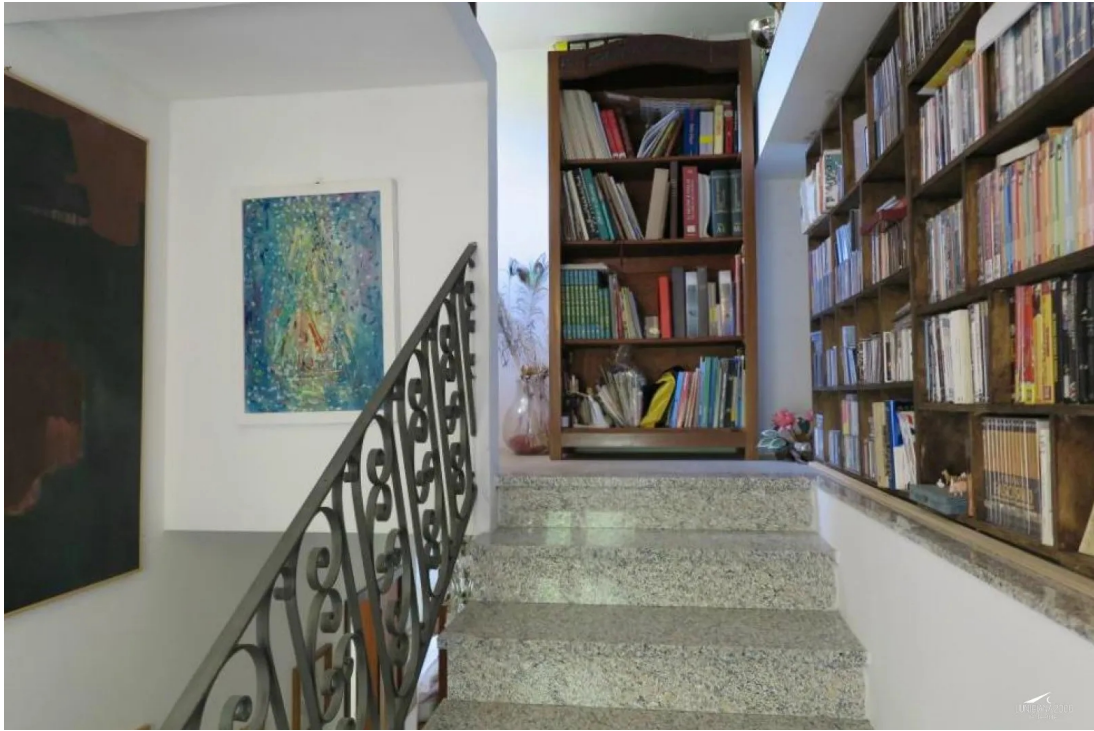














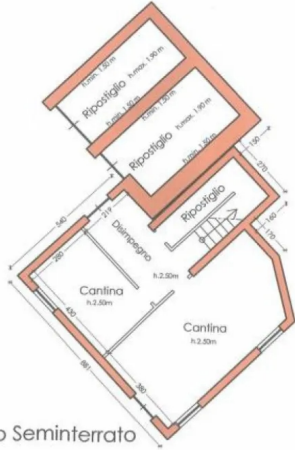




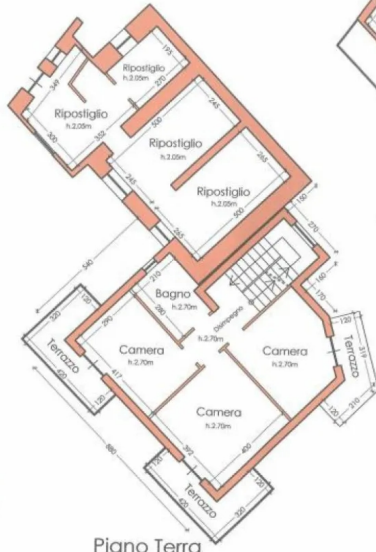




Piano Seminterrato



Piano Terra



Piano Primo

