



LUNIGIANA 2000

real estate

Réf. 468

Characteristic liberty palace in the heart of a typical village



DESCRIPTION

Unique **historic palazzo** (approximately 400 sq m) dating back to 19th Century facing the main medieval village square, with shops, cafe-bar, restaurants, bank and post office.

The palazzo maintains a lots of original features including terracotta floors and vaulted celings with frescoes.

The property comprises 6 double bedrooms with ensuite, kitchen, frescoed living rooms, store rooms and utility-rooms.

Ideal as luxury private home as well as business accomodation.

DÉTAILS TECHNIQUES

Surface habitable

400 m²

Pièces

15

Chambres

6

Salles de bain

6

Altitude m s.n.m.

300

Classe énergétique

367.15 Kw/h m²

État

abitabile

Catégorie

G

MESSAGES.PROPERTY_IMAGES









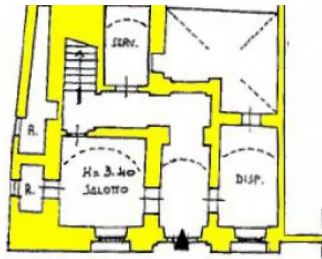




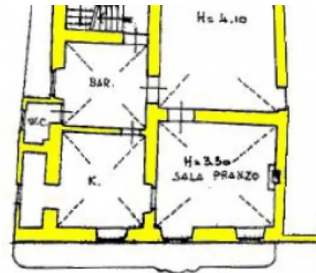








PIANO TERRA H = 3.00



PIANO PRIMO H = 3.00

